



## HEAP GLOBAL



☎ +961 78825675

✉ [info@heap-global.com](mailto:info@heap-global.com)

🏠 Lebanon, Jeita

intro

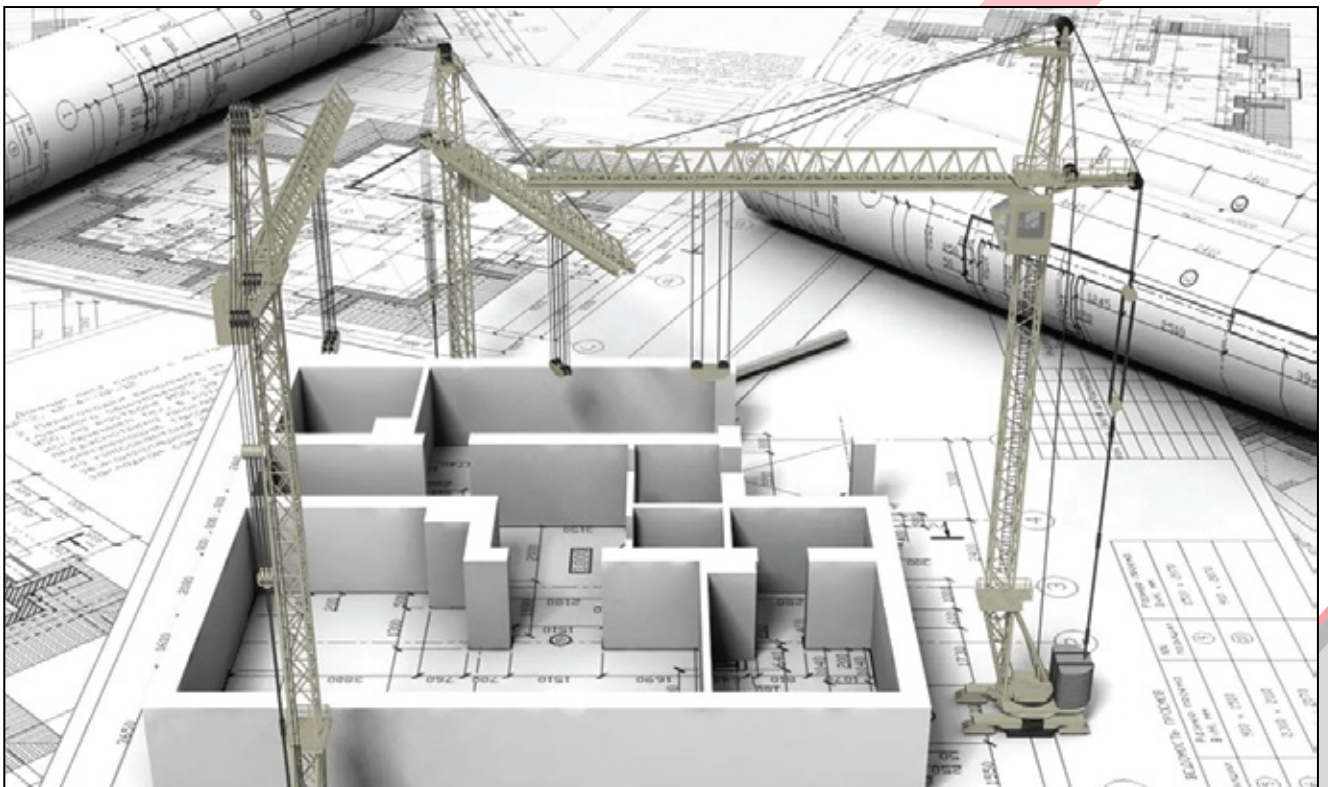
# ABOUT US

We are honored to present ourselves, we are the House Of Engineers, Architects and Planners "**HEAP GLOBAL**", a multidisciplinary engineering firm that provides high-level services and solutions for both domestic and business sectors.

After decades of coordination and collaboration with national and international corporations, we, as founders of **HEAP GLOBAL**, can now offer you the best architectural designs and engineering solutions based on the constraints and specificity of each particular site.

WE LISTEN TO YOUR NEEDS AND DEMANDS,  
and aim to create master plans, which are not only unique,  
BUT ALSO COMBINING EFFICIENCY,  
ECONOMY AND DESIGN.

HEAP GLOBAL STANDS READY TO WALK  
WITH YOU THE EXTRA MILE.



# OUTLINE

- . **General Introduction**
- . **BIM Projects**
- . **BIM 4D**
- . **BIM Fabrication**
- . **WHY CHOOSE US**

## General Introduction

House of Engineers, Architects and Planners : "Heap Global"

- Multidisciplinary engineering firm that provides high-level services and solutions for both domestic and business sectors

Decades of coordination and collaboration with national and international corporations

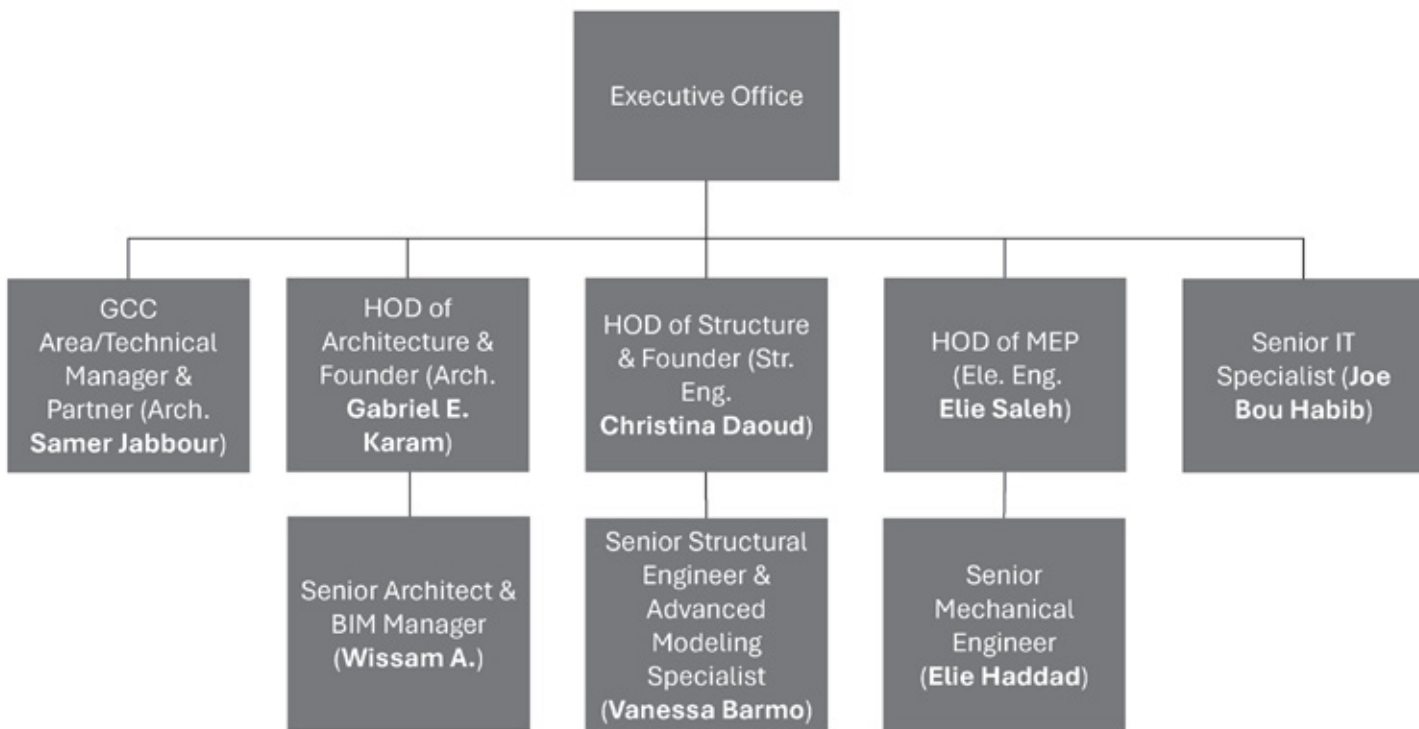
- Ability to provide the best architectural designs based on the constraints and specificity of each particular site

We listen to your needs and demands, and aim to create master plans

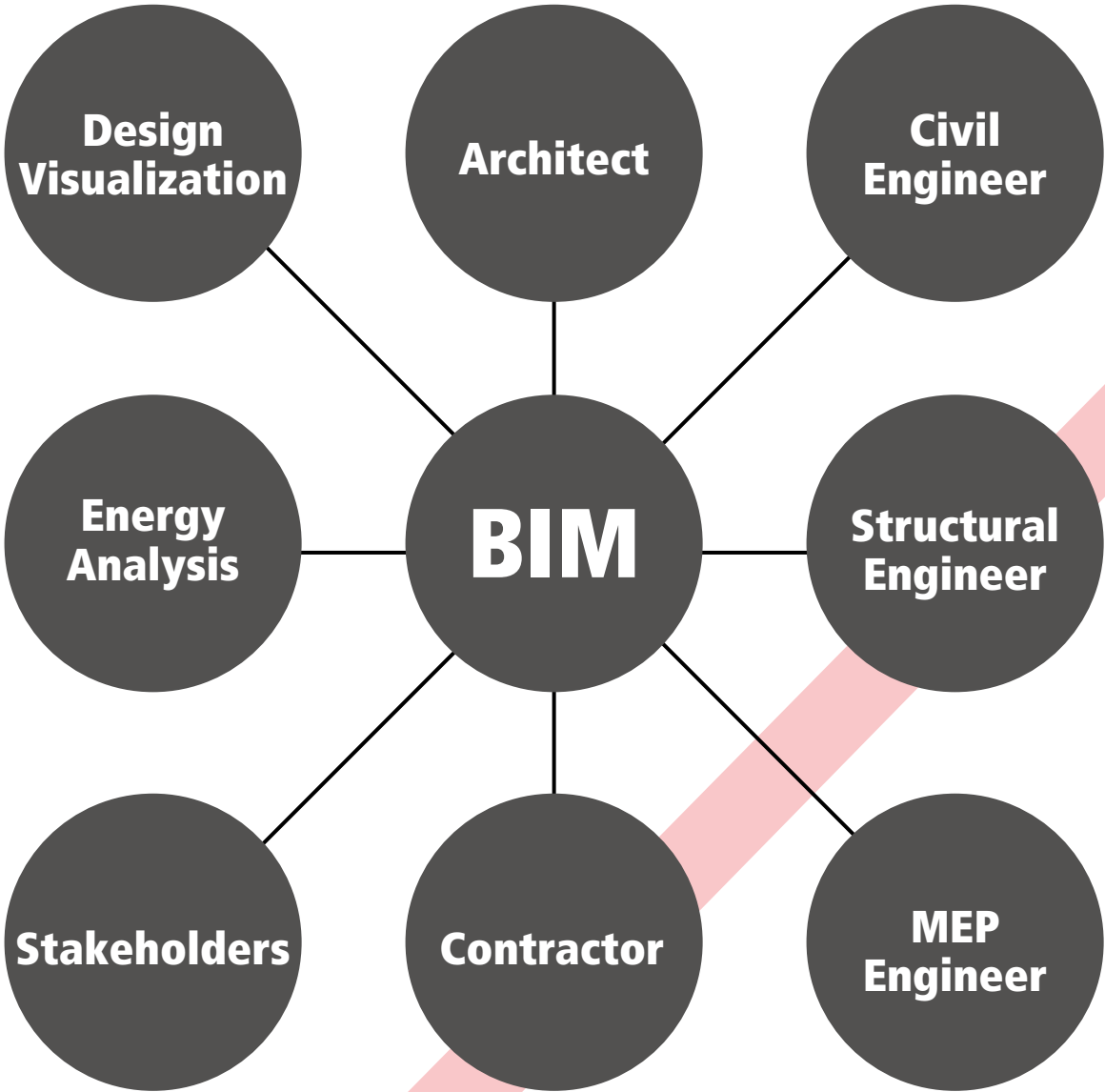
- Unique, but also combining efficiency, economy and design

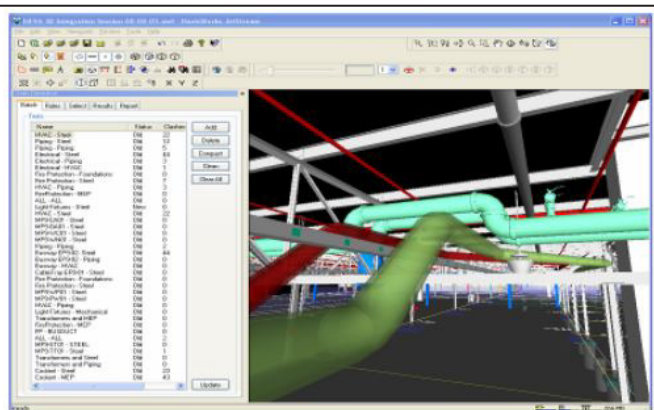
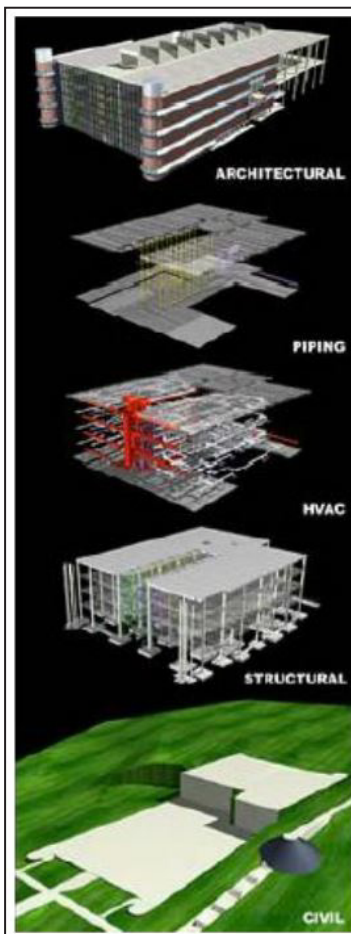
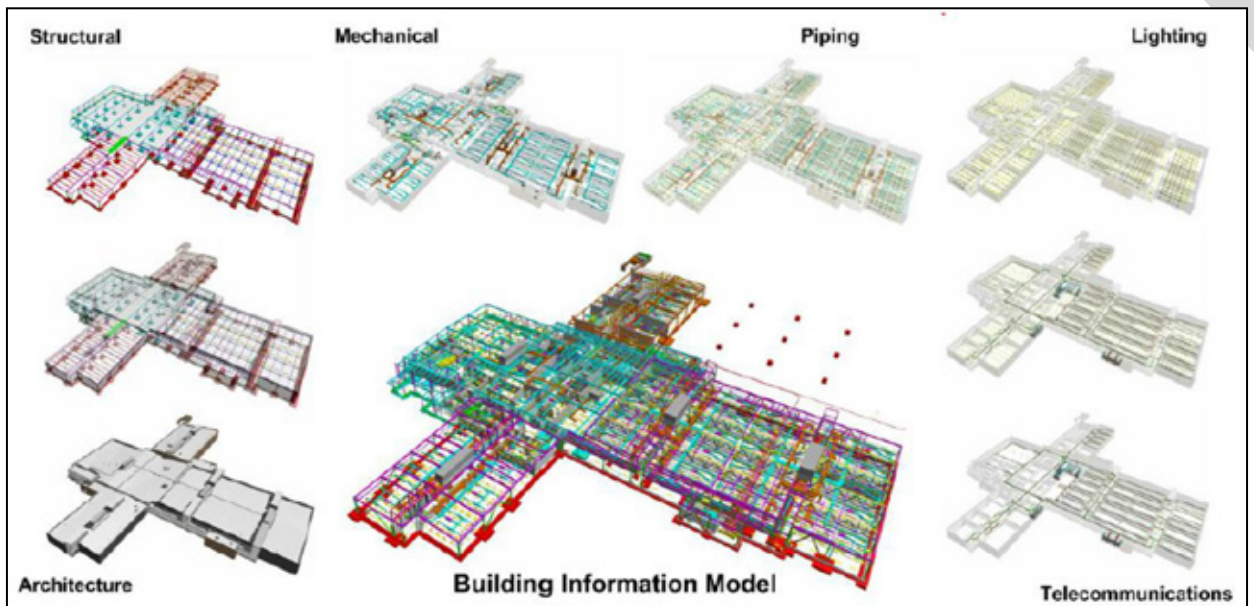
**Our motto:** Ready to walk with you the extra mile

## Our organization structure

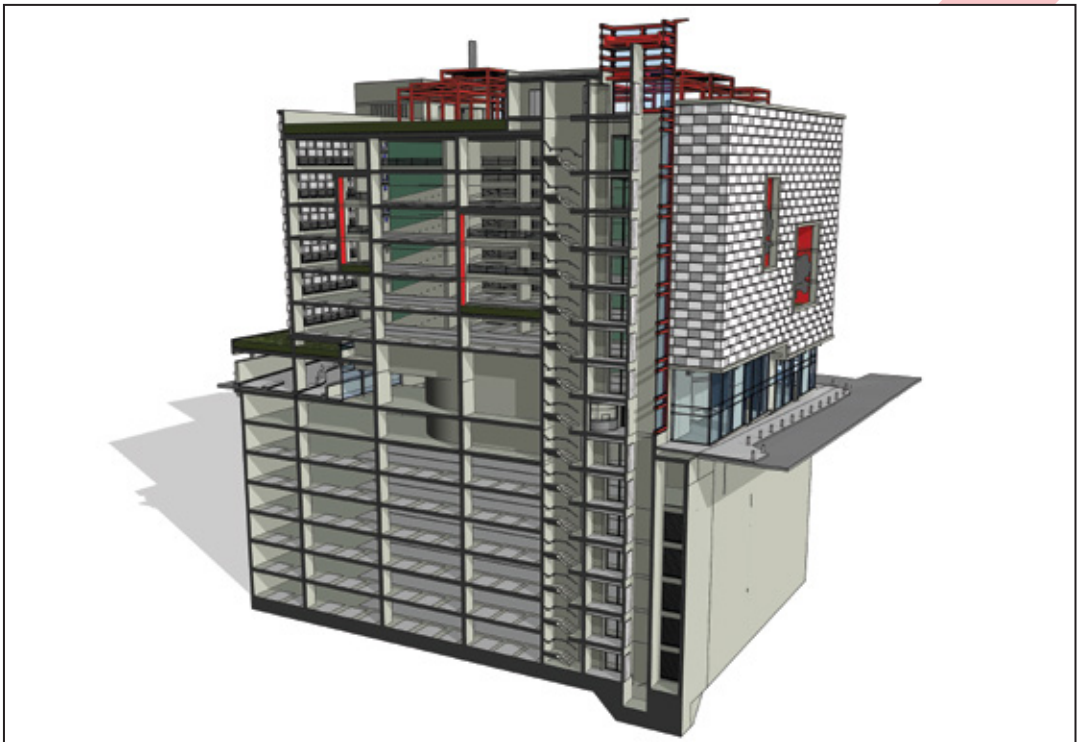
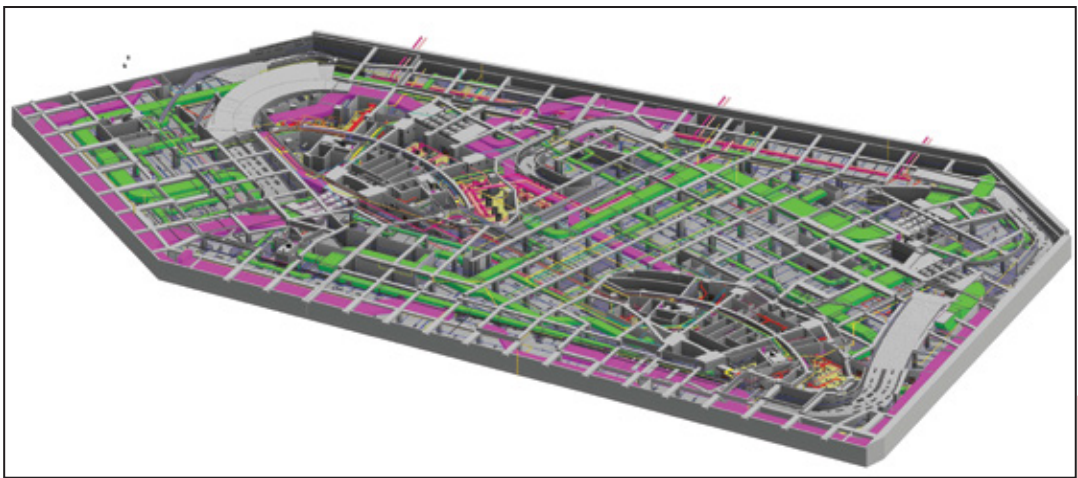


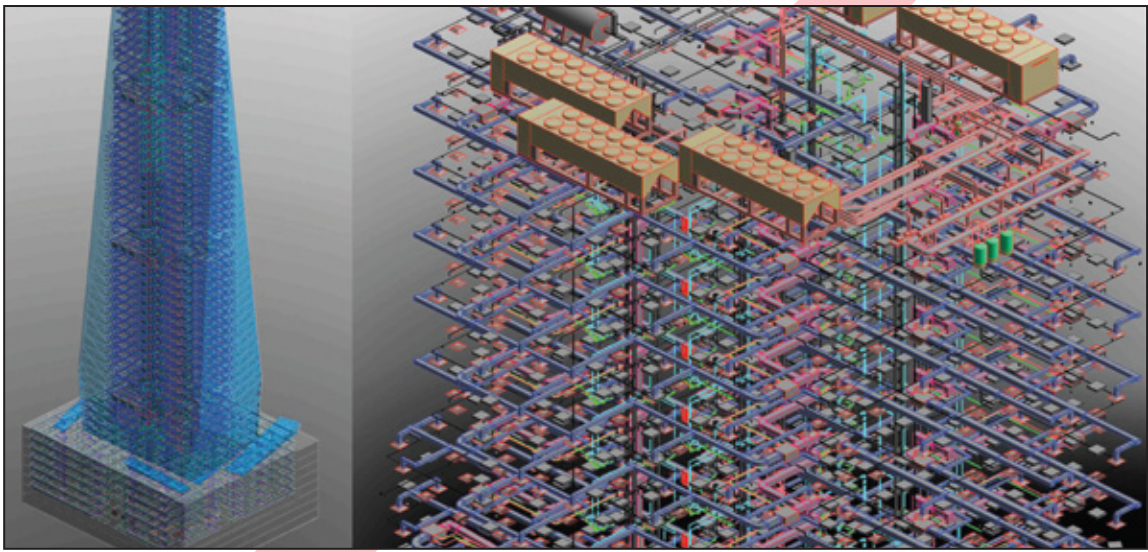
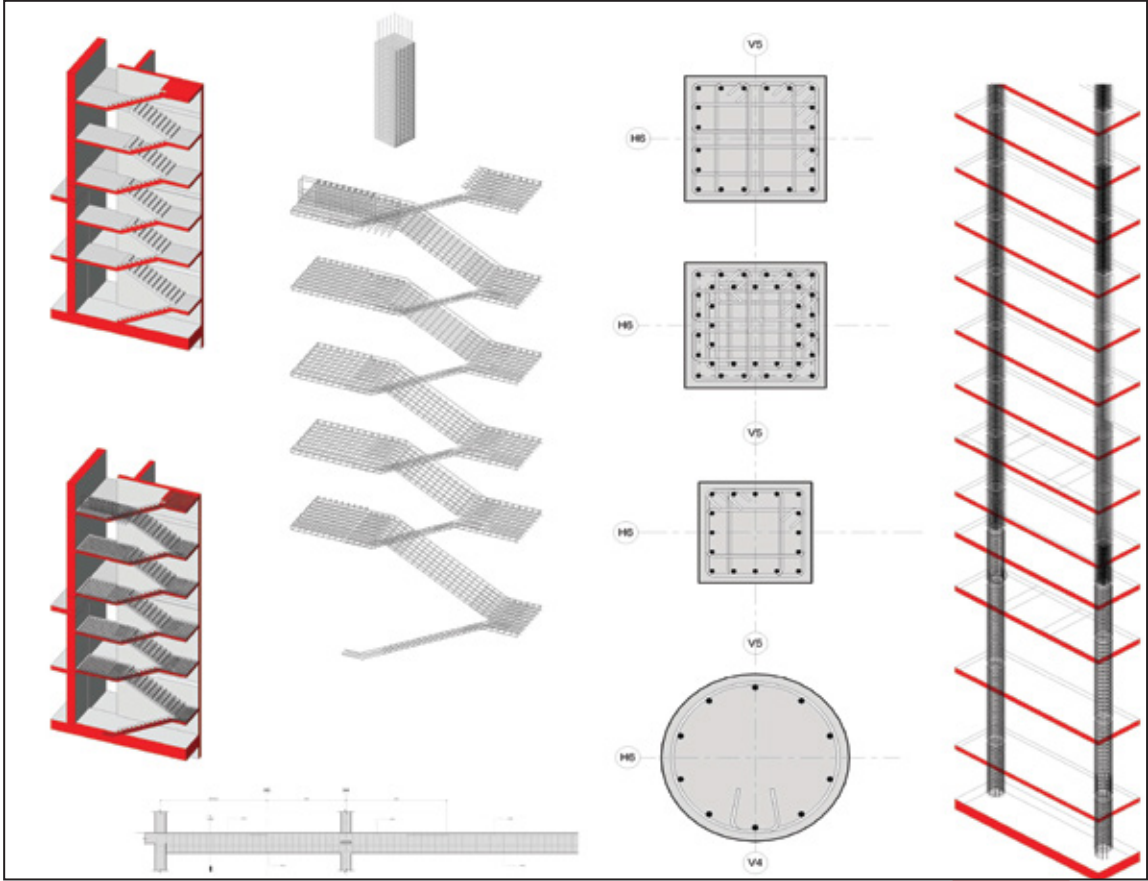
Our coordination process





# BIM Projects







# Elegushi Mini-Estate

## -Nigeria

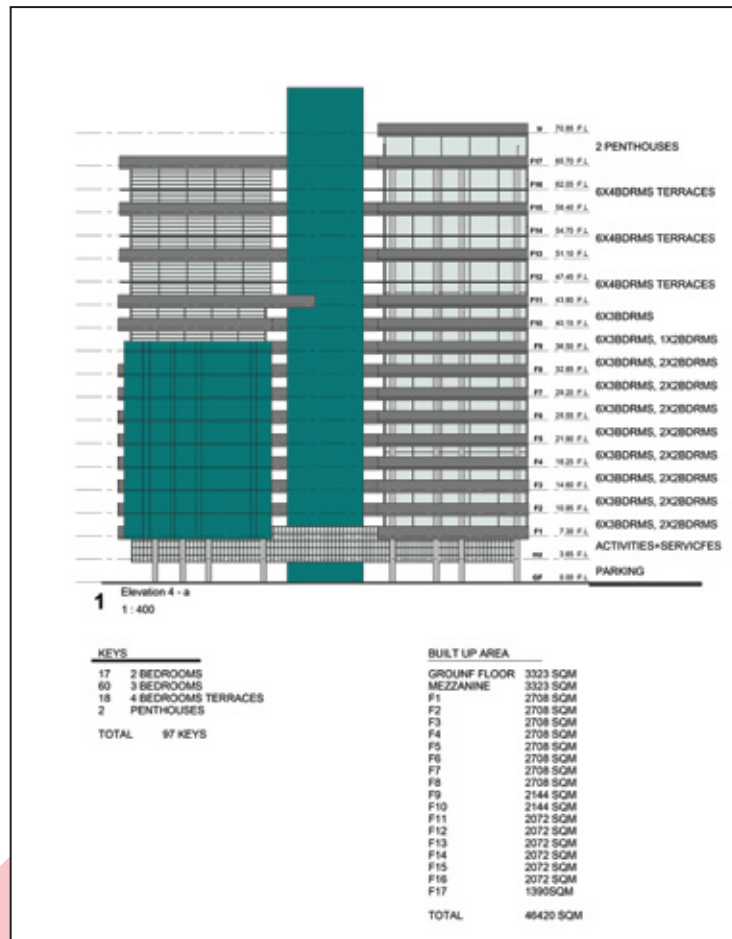






# Banksome Tower





# Bloom Residential





# Mak Villa

- Lebanon, Beit Mery





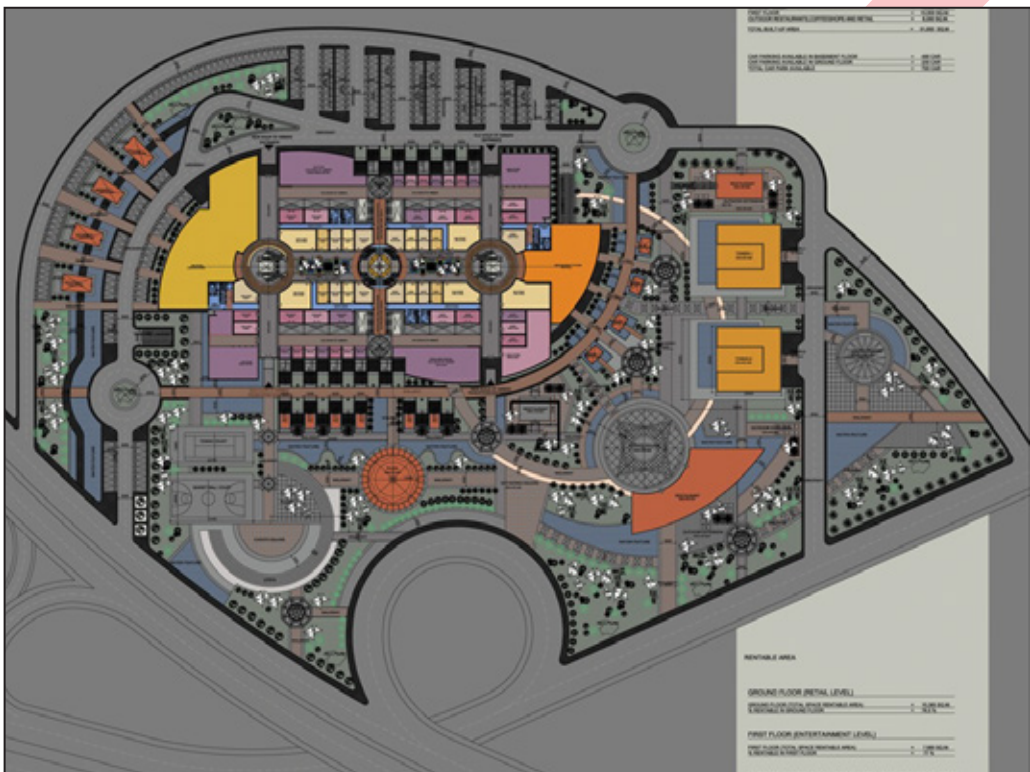
# **Villa Derjani**

- Lebanon, Rachiine





# Amman Commercial Center





# Rabban Souks



# Tulip Inn

Role: Project management





# SIX FLAGS QIDDIYA

## - Saudi Arabia

10 000m<sup>2</sup>

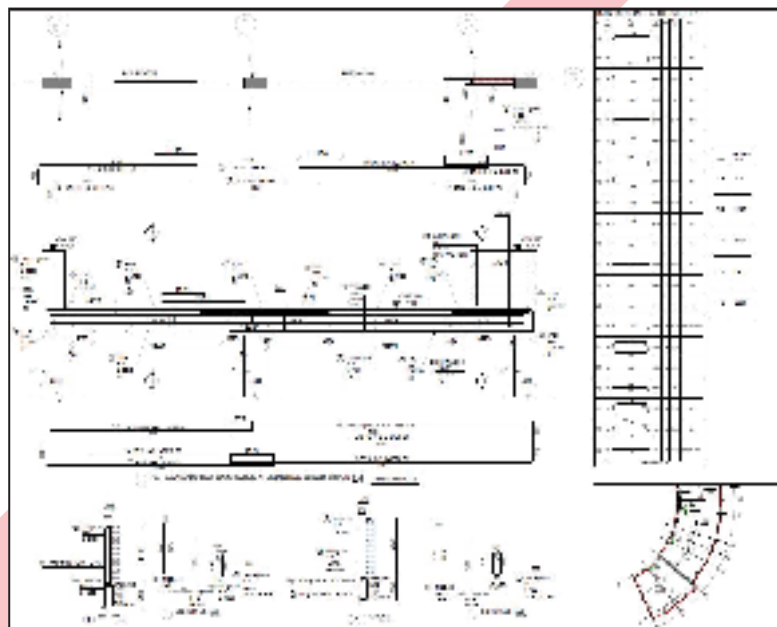
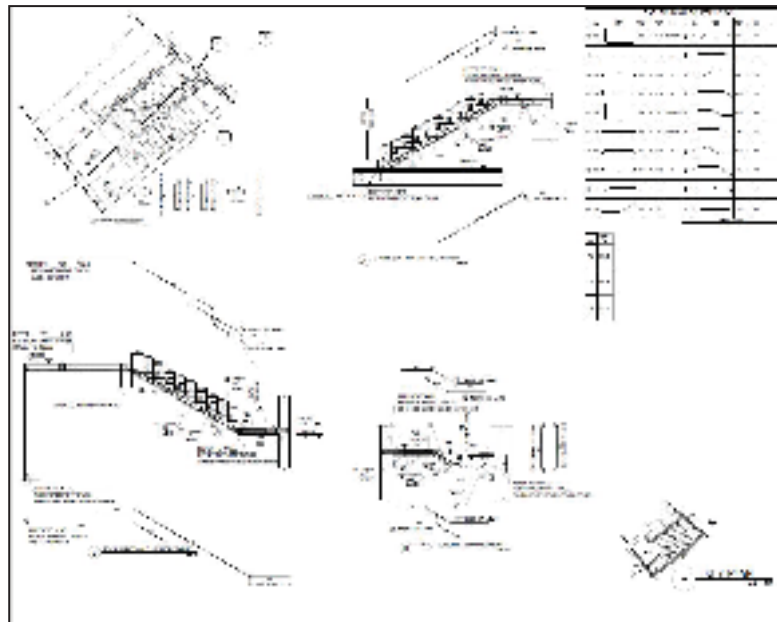
Prepare Lod 400 starting from Lod 300

Prepare shop drawings (structure)

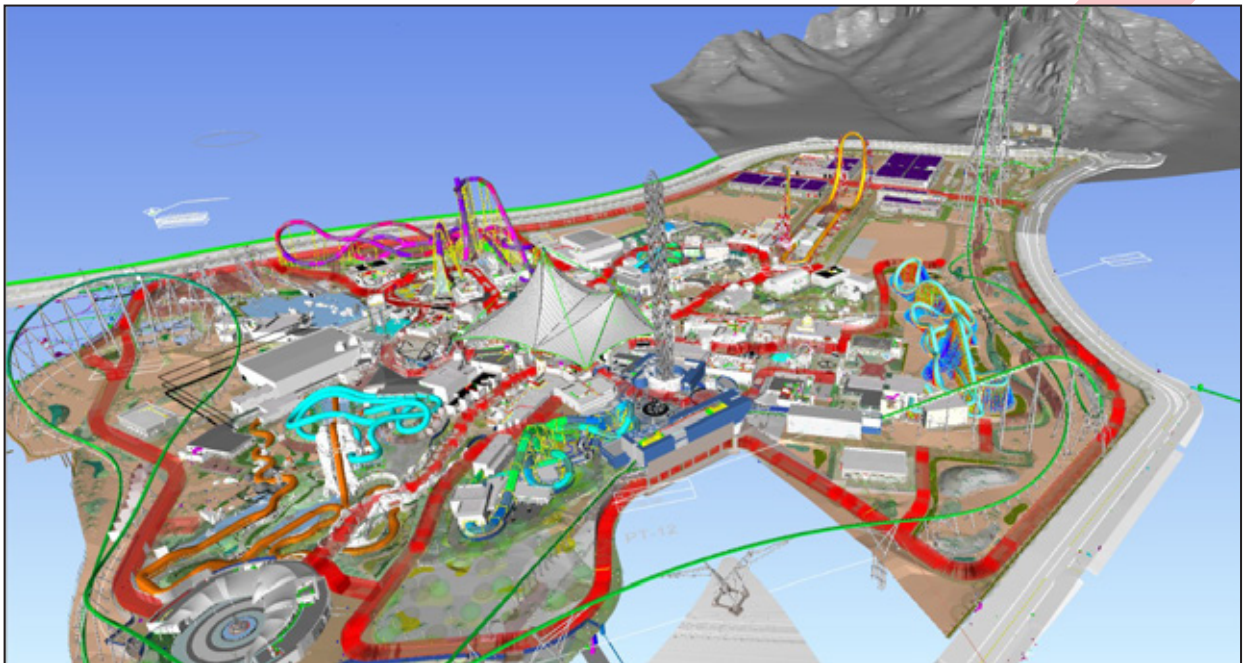
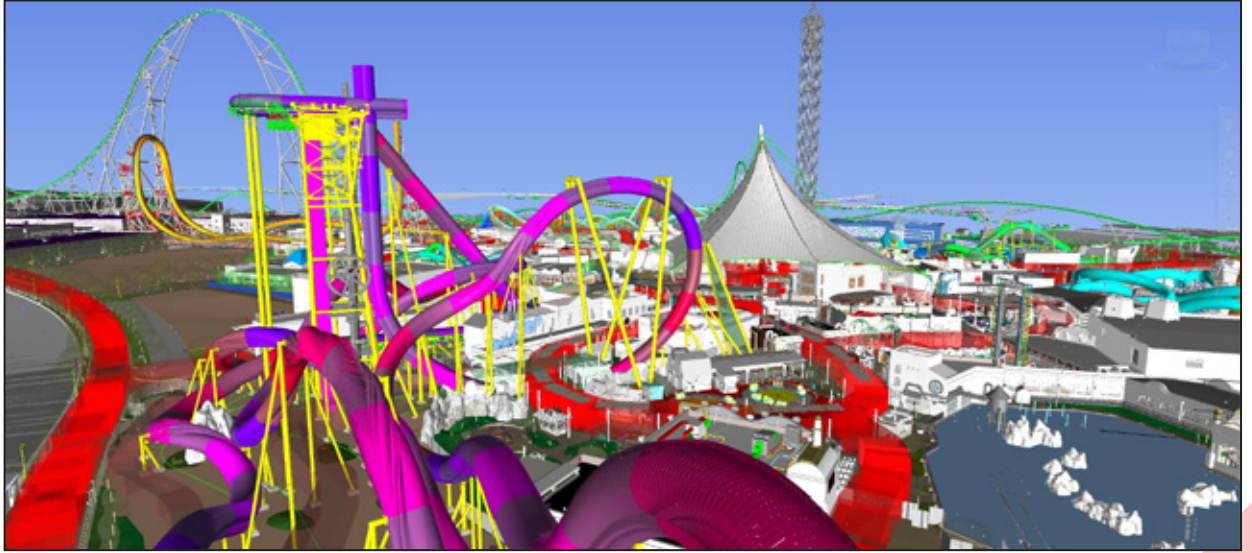
Prepare Lod 500 after approval on shop drawings,  
And work as as-built drawings.

Work using Autodesk Construction cloud (ACC)

Prepare as-built drawings



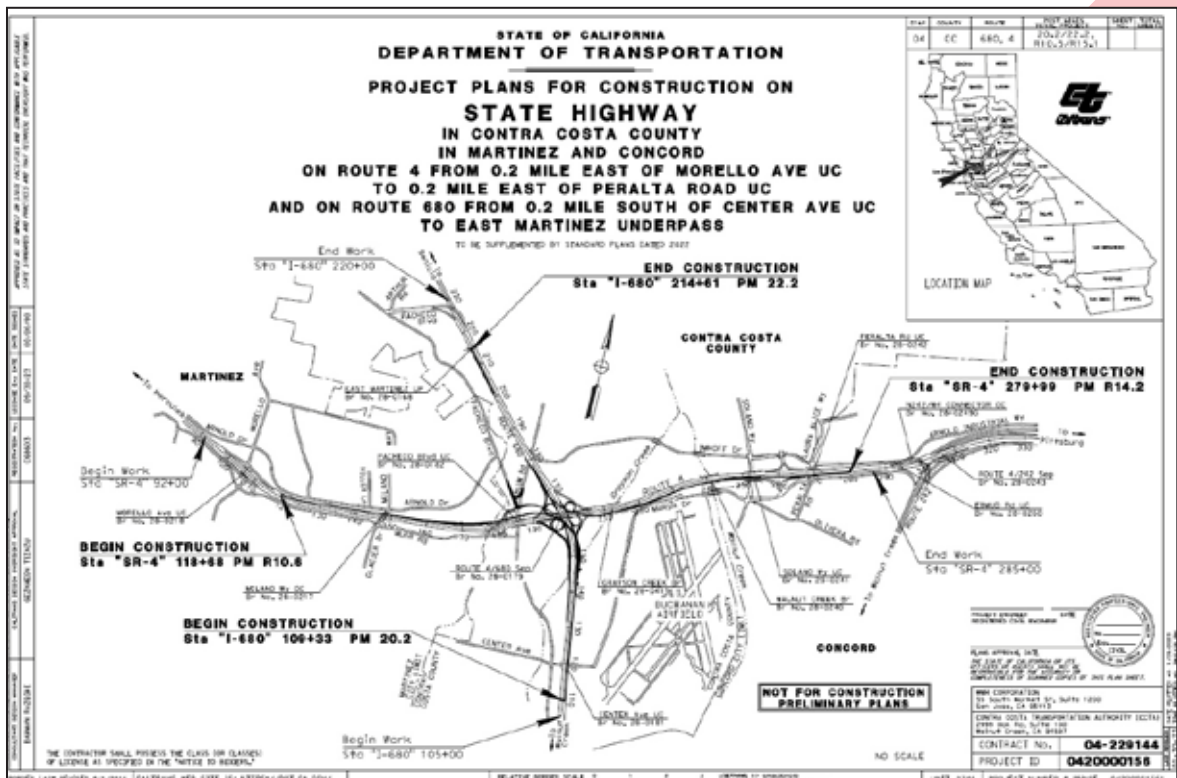


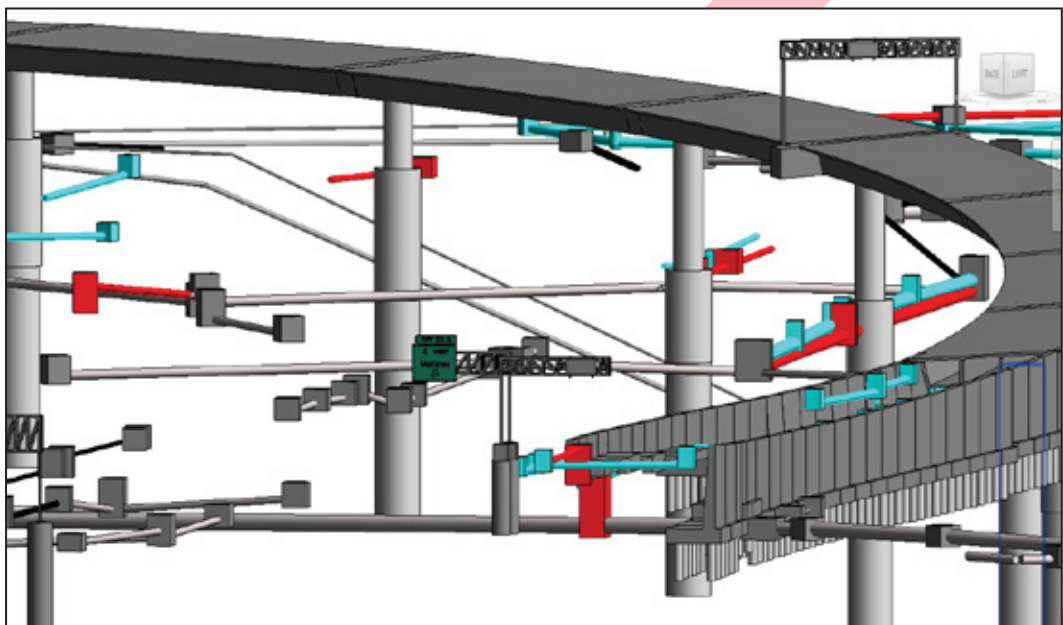
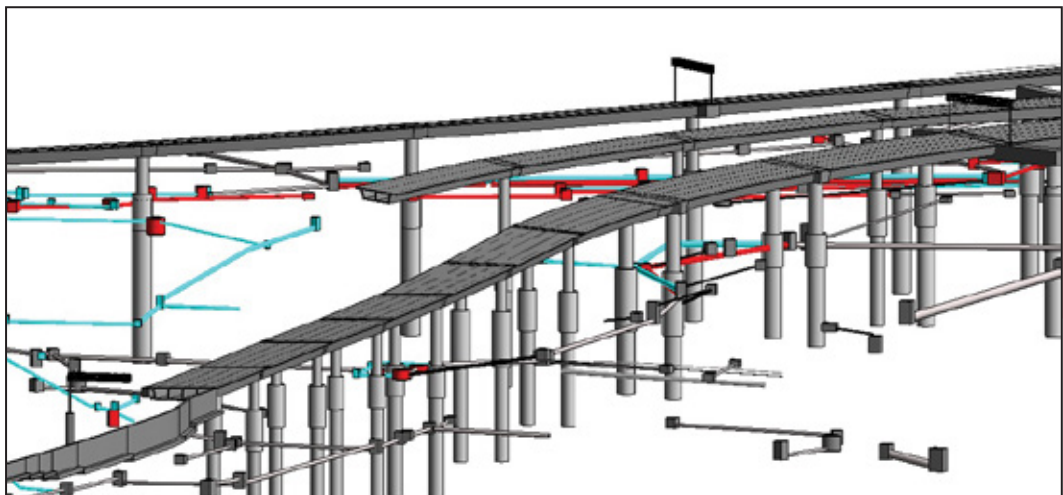
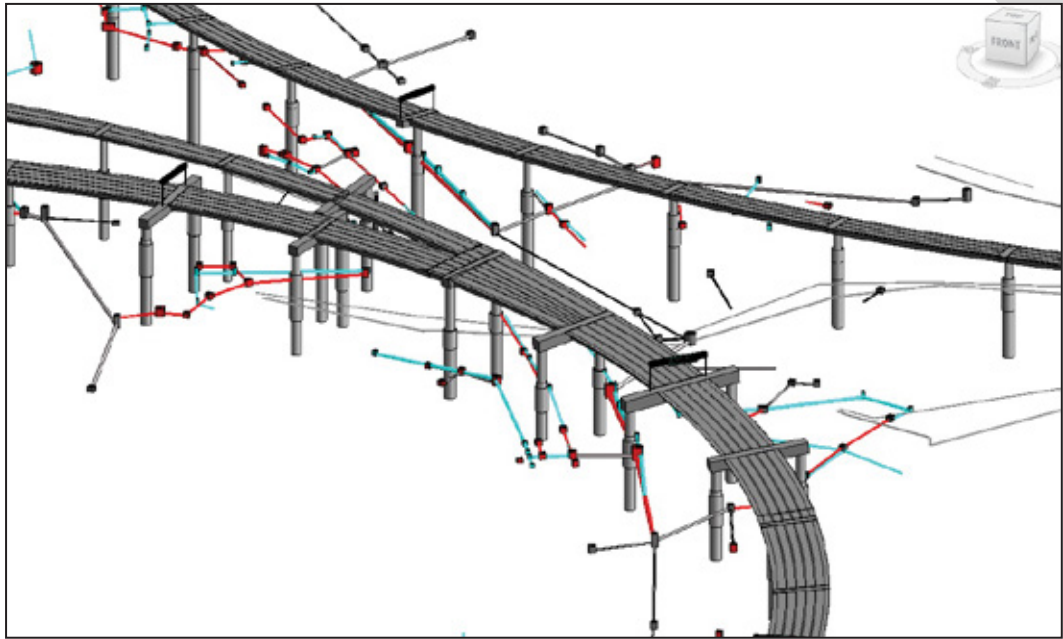


# Costa Contra County - USA

10km

Revit modeling  
Clash detection  
Exporting lfc, 3d cad  
Coordination with all trades (mechanical, electrical, structure)  
LOD 200 and 300  
Starting from cad files







I-880/Montague Expressway Interchange New Concept



Bonanza Cabinets

GB Heating and Air Conditioning, Inc.

Source: City of San Francisco, 2014

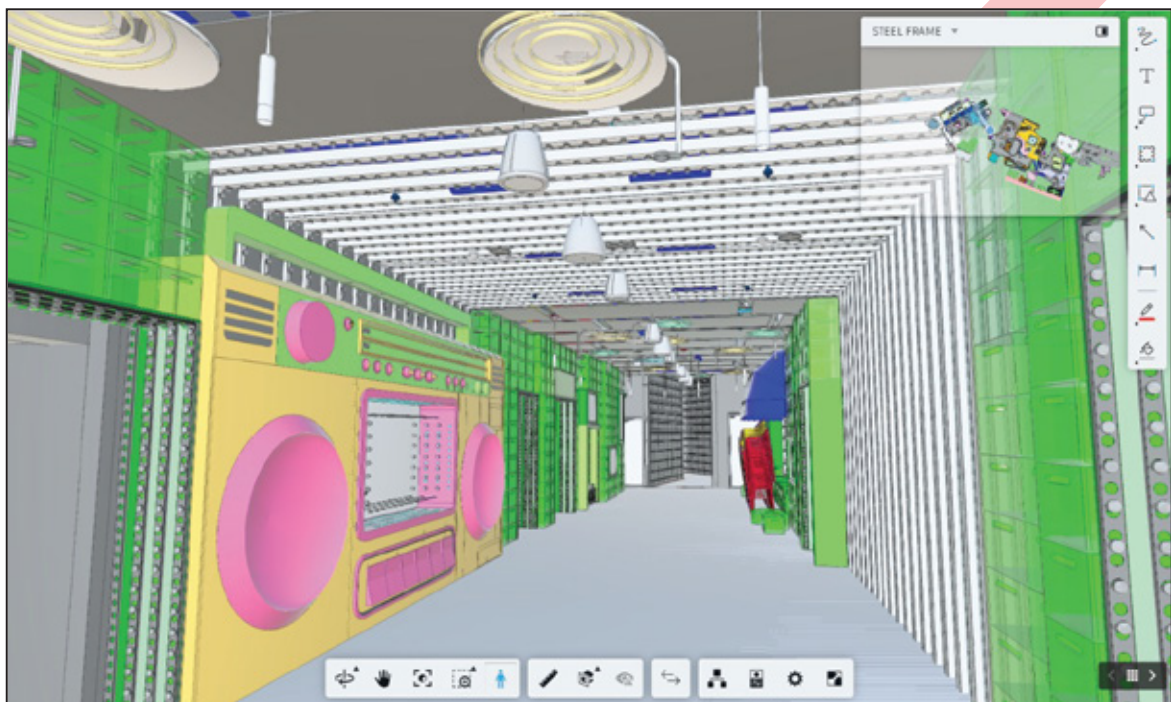
Maple Valley, WA

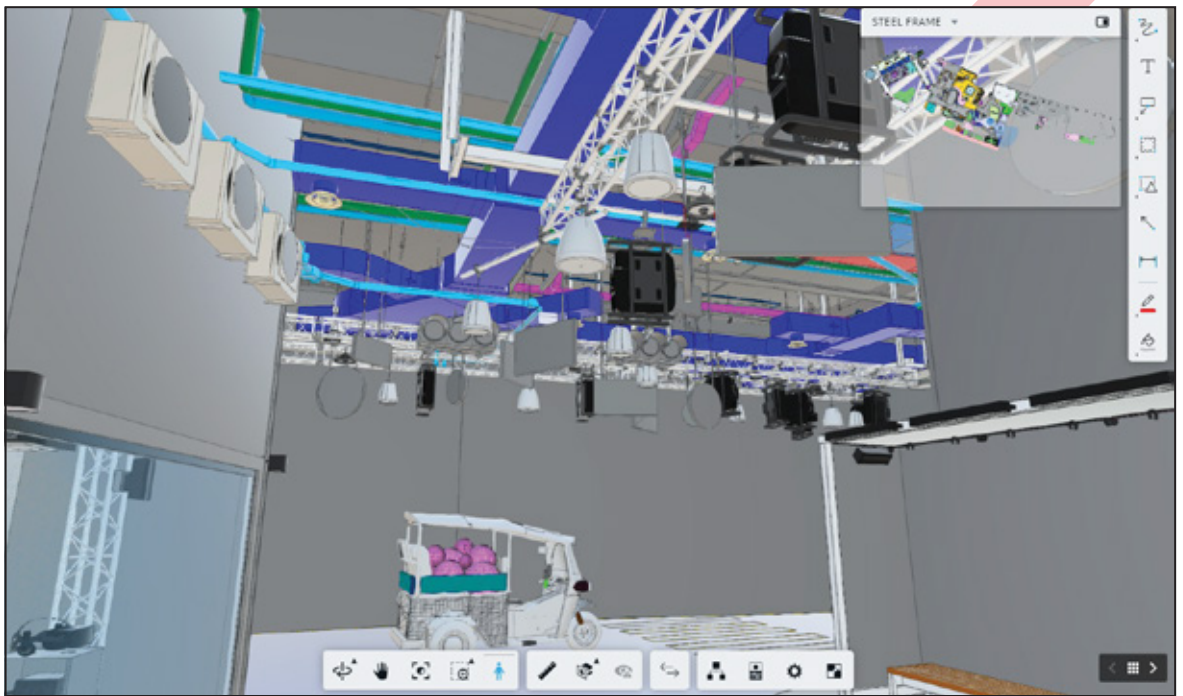
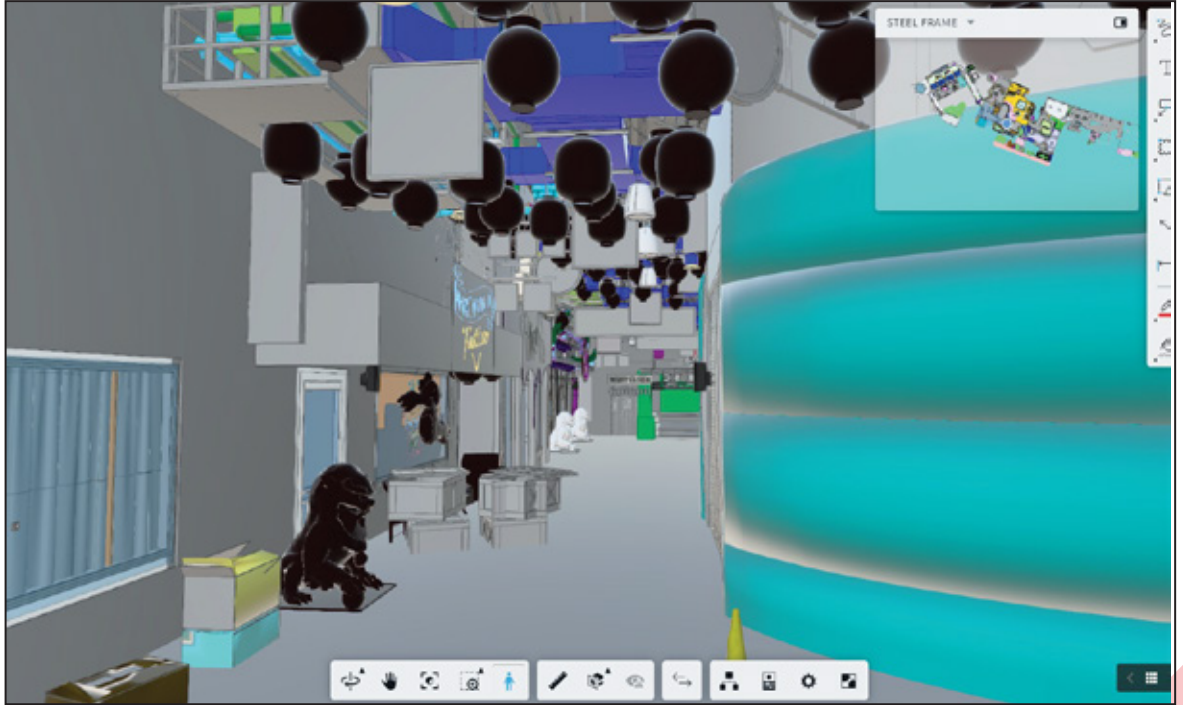
# House Of Hype (HOH) Dubai Mall

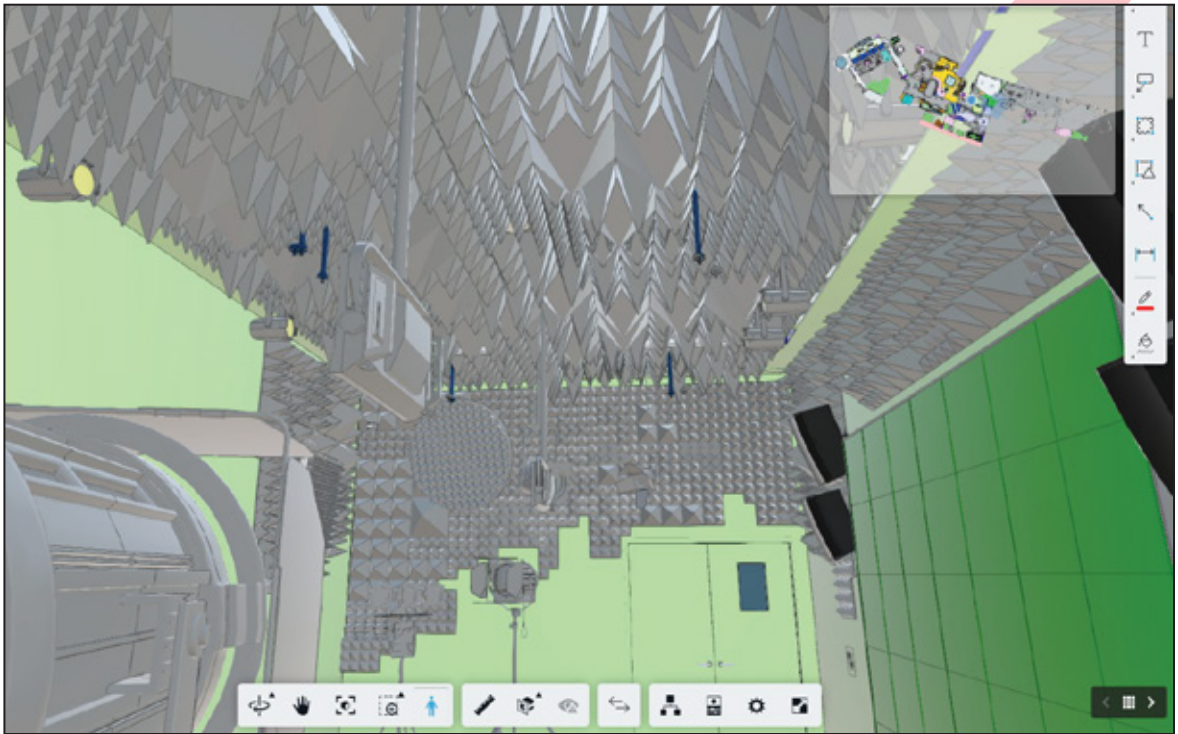
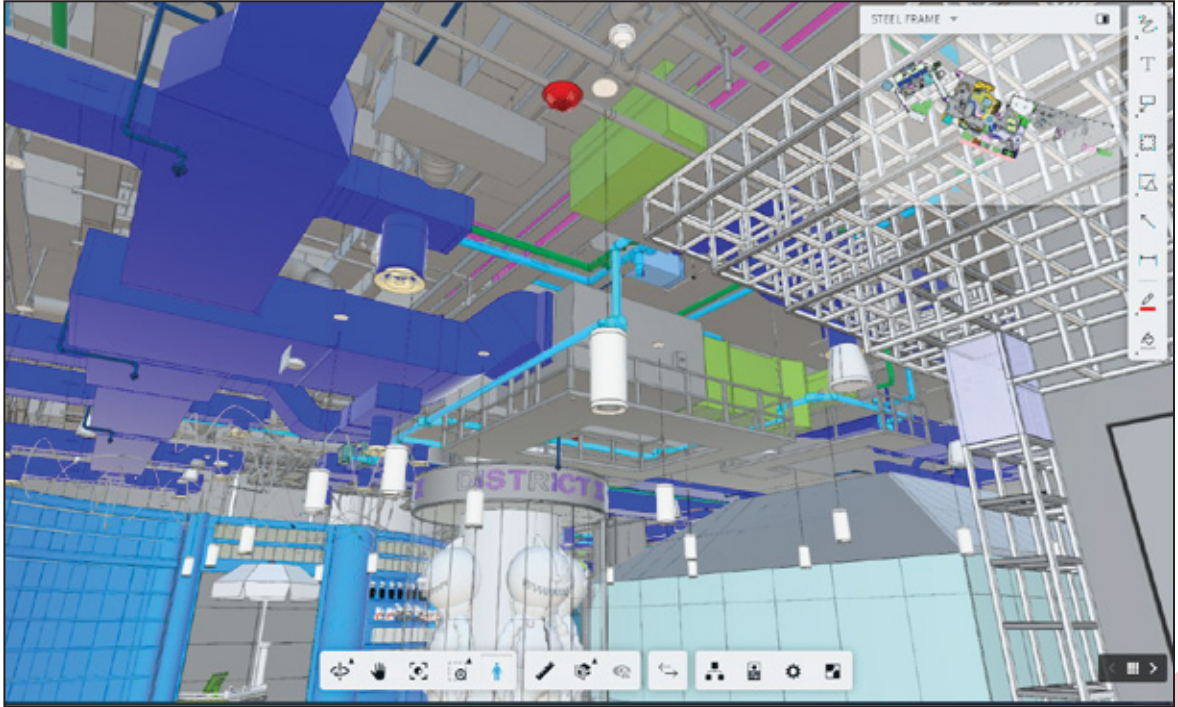
## - Dubai, UAE

8500m<sup>2</sup>

Prepare Lod 300 starting from Lod 200  
Coordinating with all trades  
Prepare Lod 400  
After getting approval on Lod 300  
Prepare detailed shop drawings For all trades (architecture, MEP, structure, interior...)  
Work using BIM collaborate  
Prepare clash detection reports





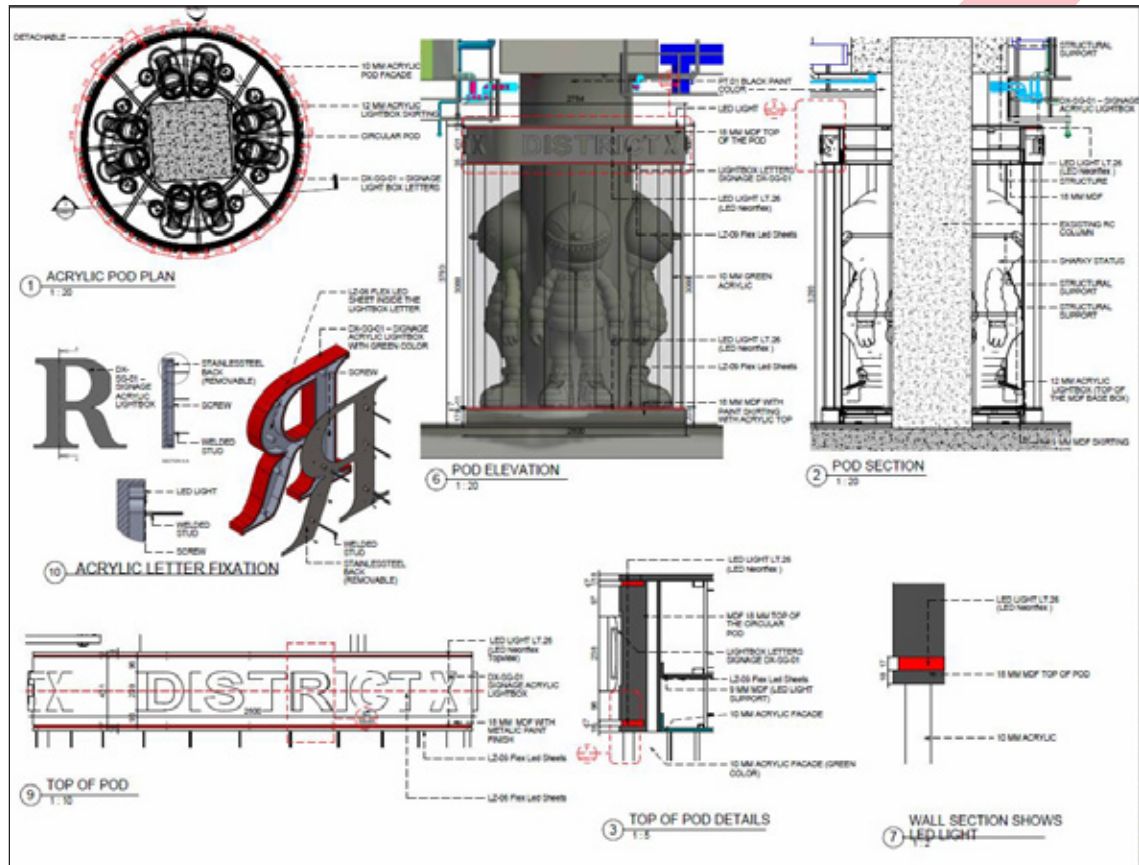
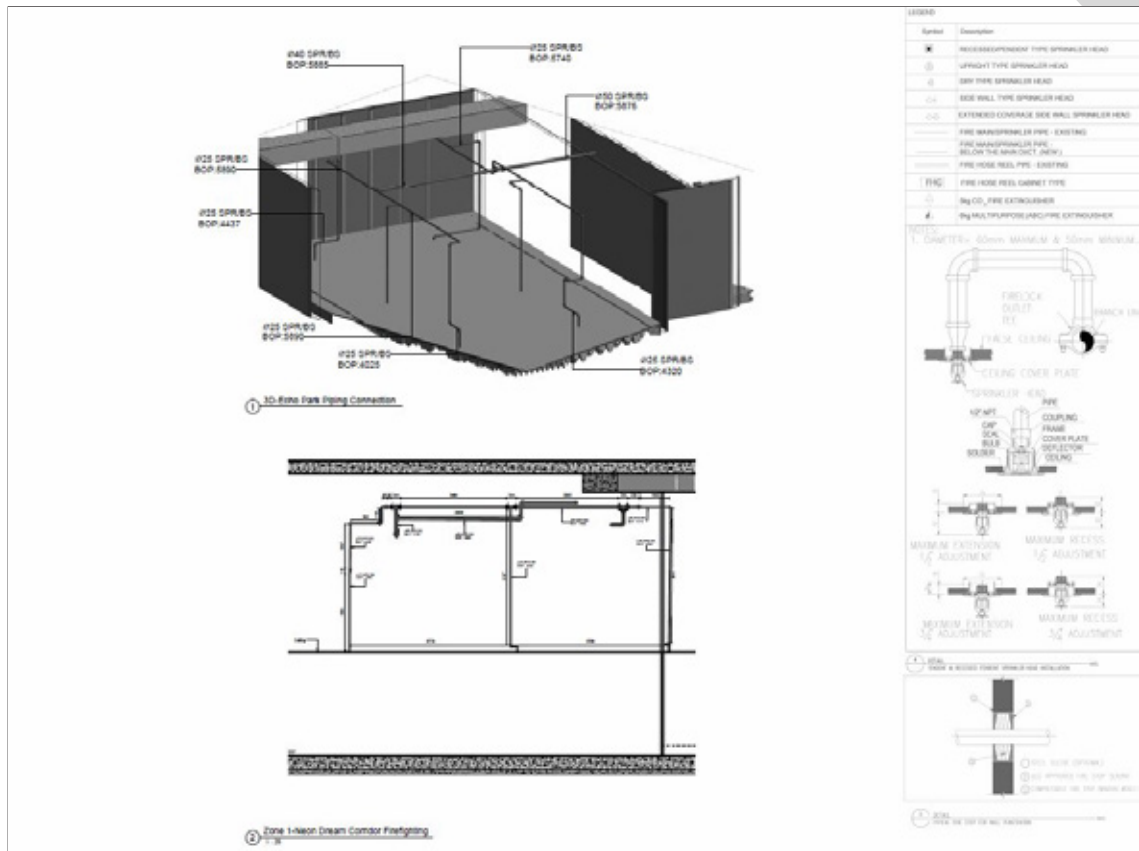


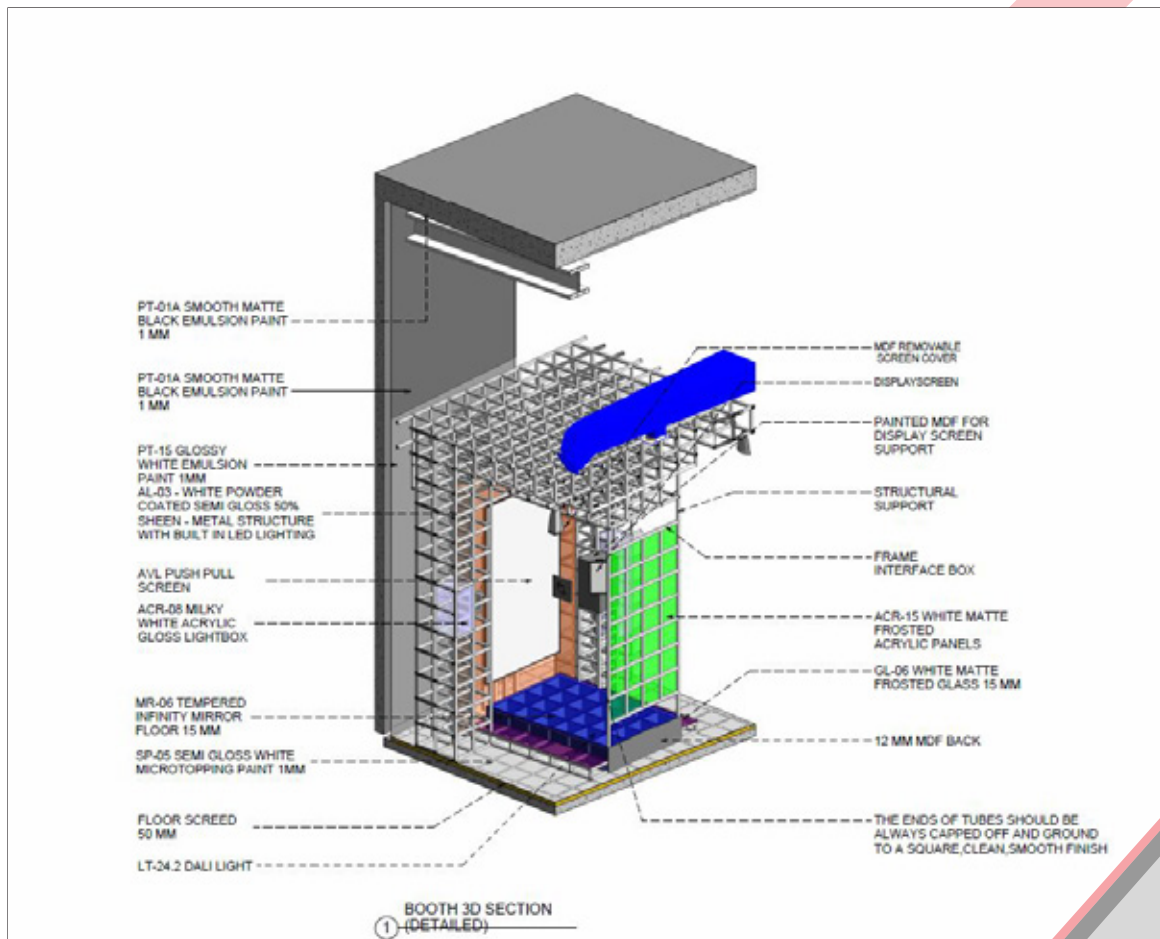
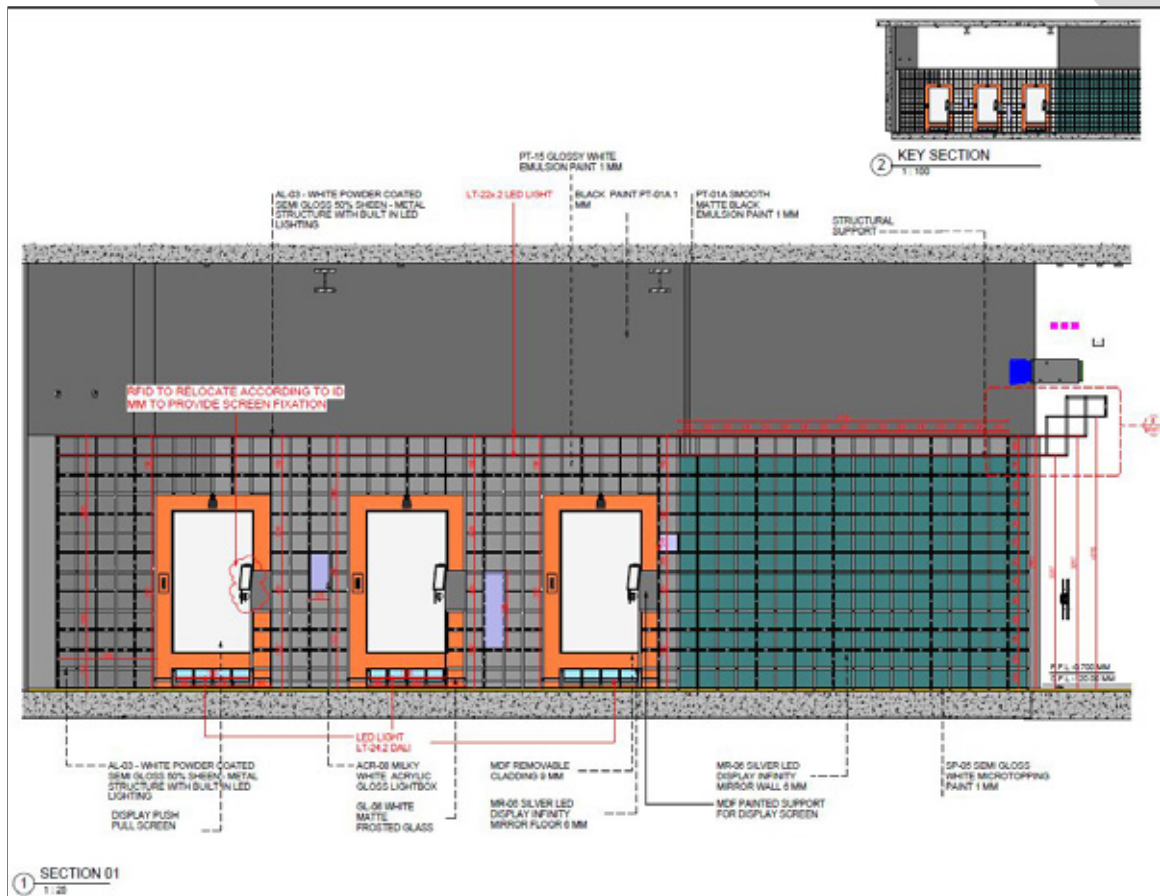
Fit out project  
All trades  
Structure  
Mechanical  
Electrical  
Architectural  
Interior design  
Lod 200 to Lod 300 then to Lod 400  
Shop drawings for all trades  
Clash detection - Bim collaborate







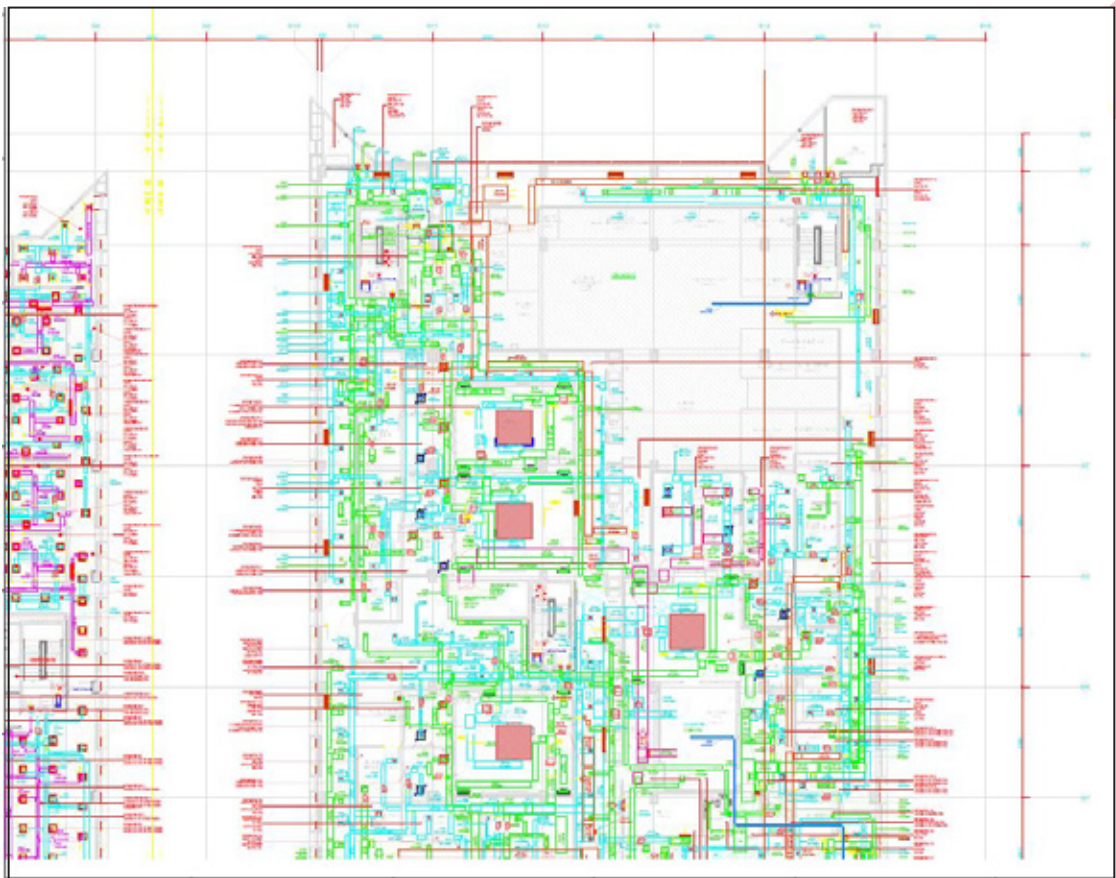






# KCC Hospital -Kuwait

Our Mechanical shop drawings for the KCC Hospital project in Kuwait provide comprehensive details essential for the installation and integration of mechanical systems throughout the facility. These drawings encompass precise layouts, dimensions, and specifications for HVAC (Heating, Ventilation, and Air Conditioning) system. Each drawing adheres rigorously to project requirements and standards, ensuring efficient implementation and operation.



# Address Sky View

## - United Arab Emirates, Dubai

Position: BIM Consultant (**part of BIM-ME team**)

Role: Coordination between different trades and shop drawings



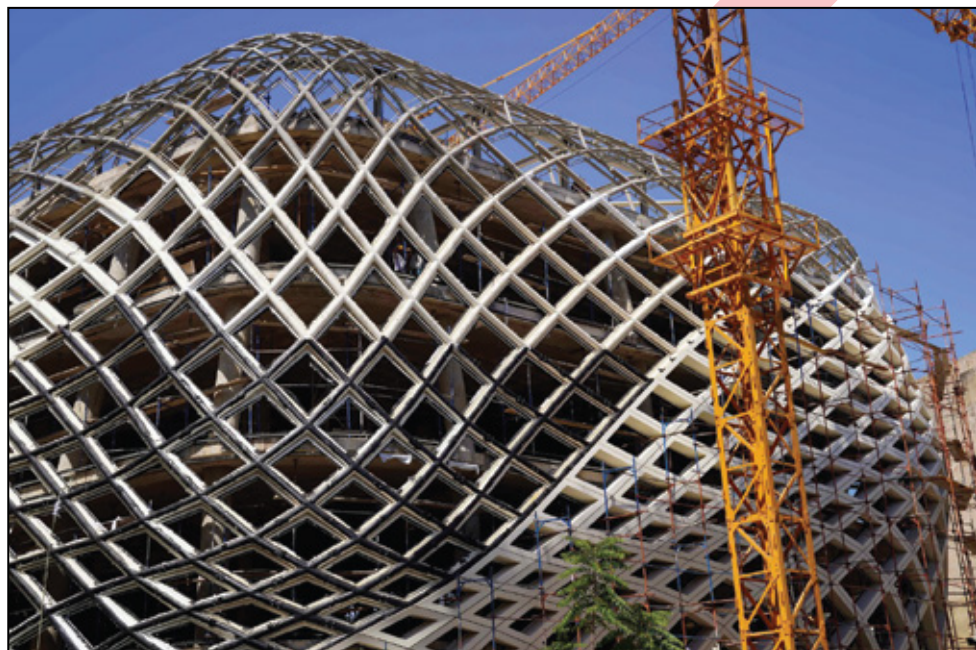
# AJ. Morino Tower

- Nigeria



# North Souks Department Store - Lebanon, Down Town

Position: Legal Consultant  
{Part of SKP team (Samir Khairallah And Partners)}  
Role: Legal Consultant, Construction Permit





# Villa A

- Lebanon, Bsous



# Oakridge Resort

## - Lebanon, Faqra

Position: Senior Architect

{Part of SKP team (Samir Khairallah And Partners)}

Role: Legal Consultant, Technical Project Manager



# Intercontinental Hotel

## - Saudi Arabia, Khobar

Position: Senior Architect

{Part of SKP team (Samir Khairallah And Partners)}

Role: Technical Project Manager



# Nupco

- Saudi Arabia



# Anambra - Nigeria





# Beirut & Bay Tower

## - Lebanon, Down Town

Position: Senior Architect

**{Part of SKP team (Samir Khairallah And Partners)}**

Role: Legal Consultant, Technical Project Manager



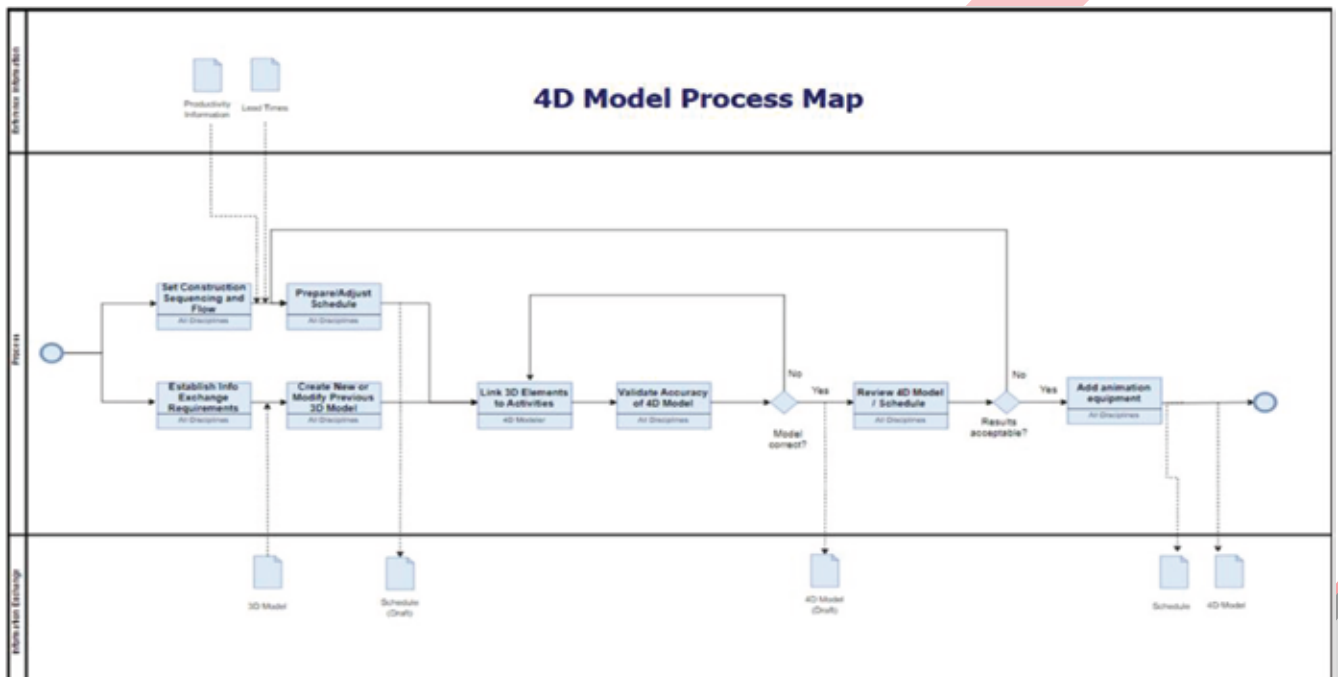
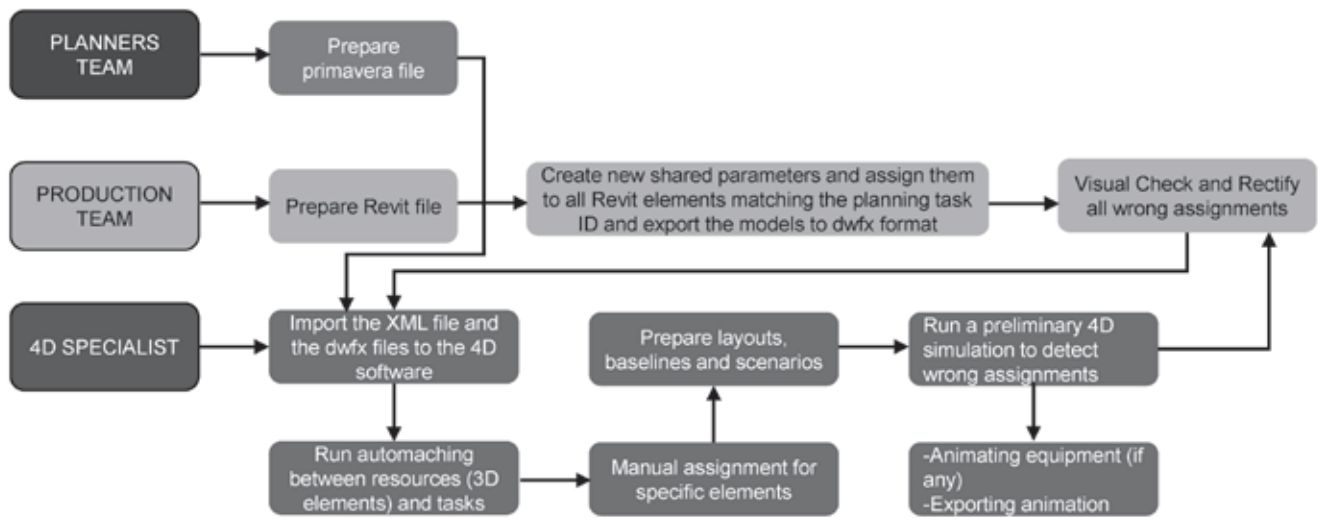
# National Bank Of Kuwait - Kuwait

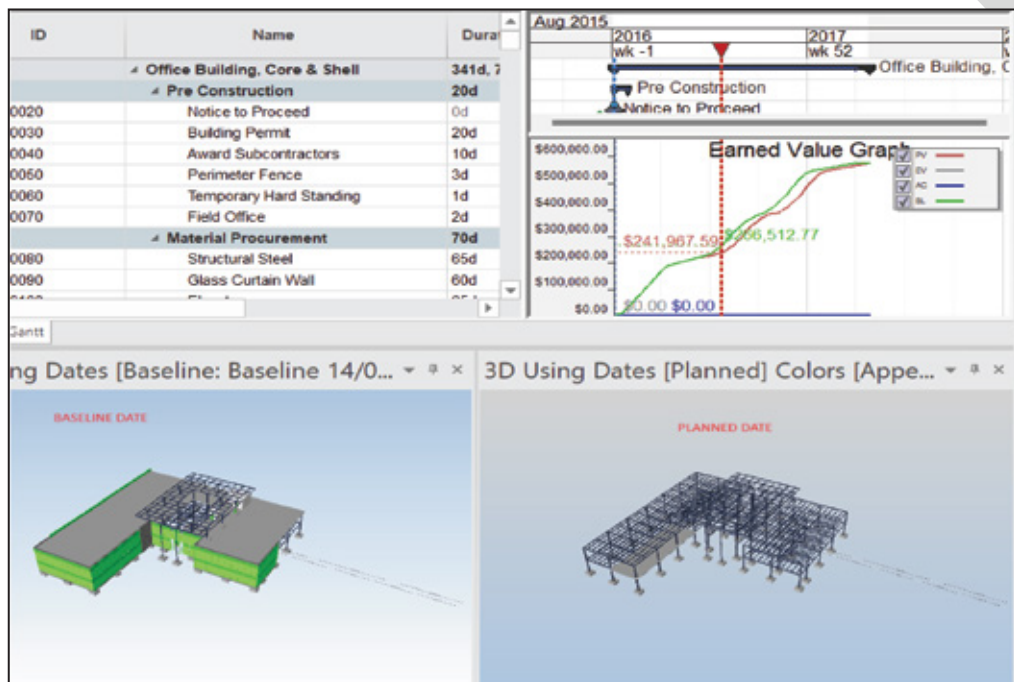
Position: BIM Consultant (**Part of BIM-ME team**)  
Role: Coordination with different trades and Shop Drawings



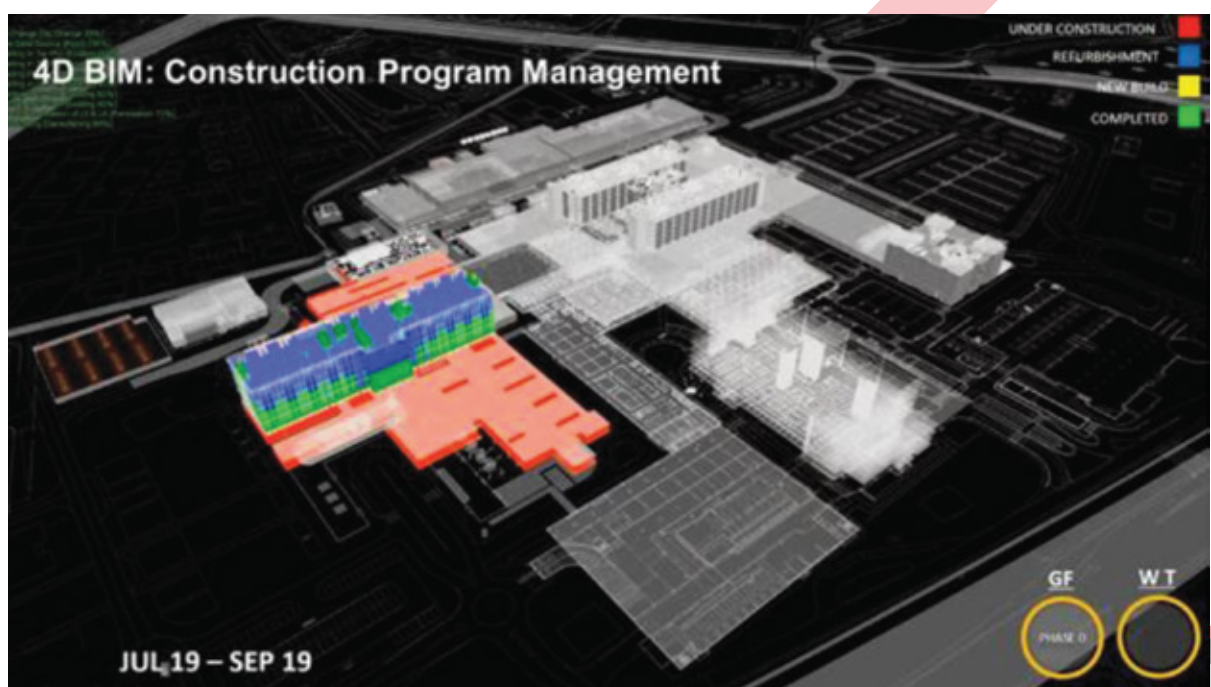


# BIM 4D





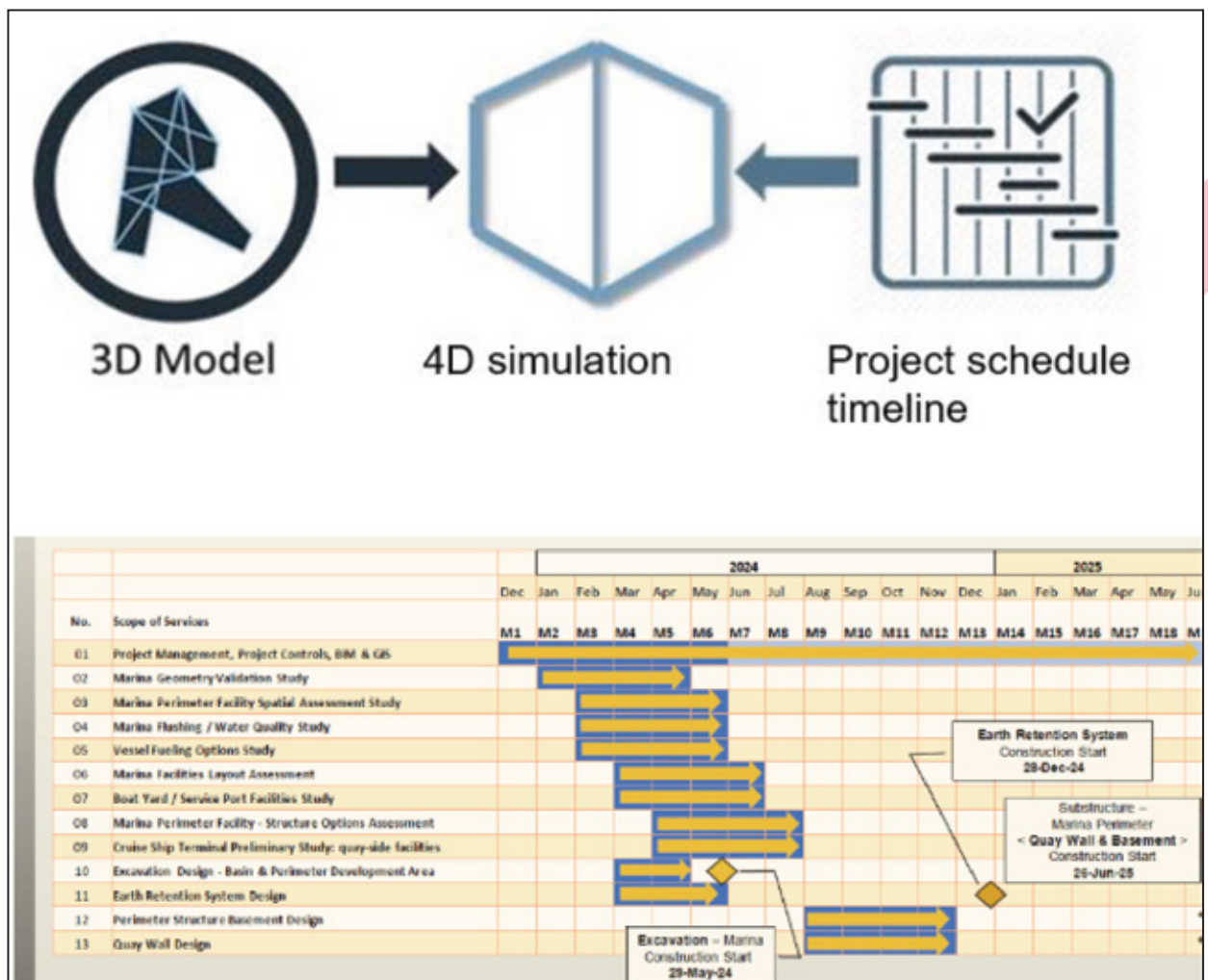
4D Sequencing is a model-based process where the construction schedule is linked to the modeled elements; non-technical and design discipline stakeholders can grasp not just the final static design intent but identify issues arising during the project design progress



It is the visual simulation of the project schedule timeline with the project stages .

A Generic and Symbolic 3D Model for the 4D simulation of planning stages based on available information provided by Client.

High-Level information will be added to the Generic 3D Model to enable Dar to develop and deliver a 4D simulation.



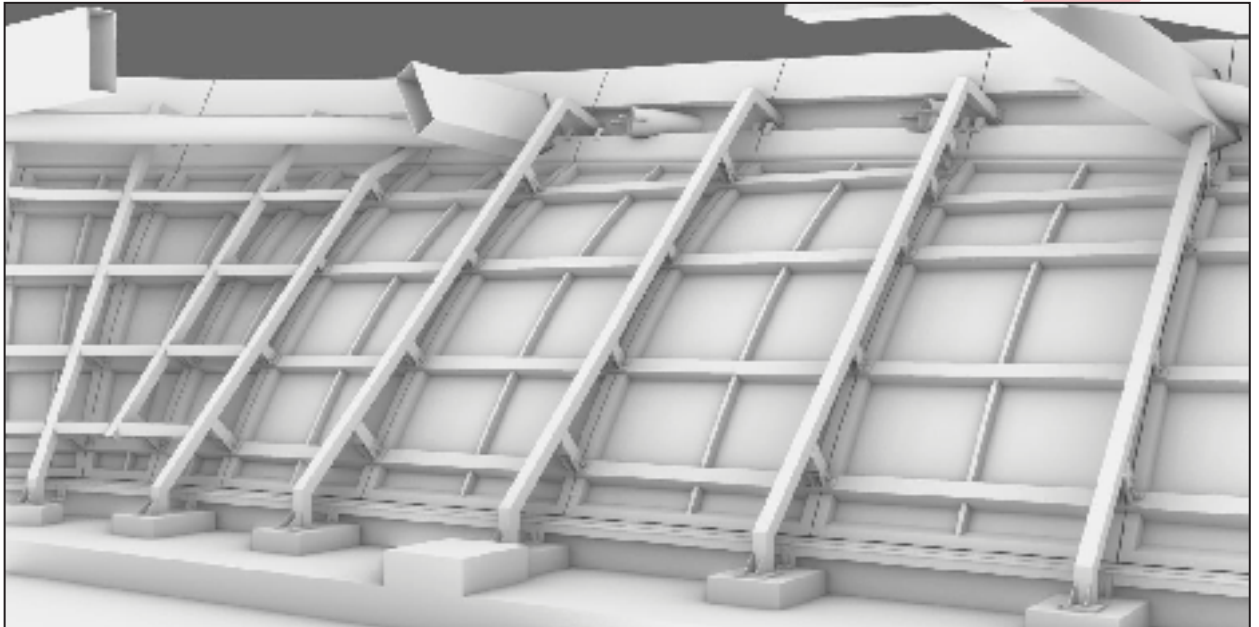
# BIM Fabrication

## Canopy Project

GFRC panels modeling from both sides based on a structural report and shop drawings (adjustable brackets, bolts, shims, and base plates)

Main challenge: adhering to complex shapes while applying typical details to meet requirements.

The project was a success, particularly in optimizing bracket and mold reductions, leading to a cost-effective result that satisfied the client.

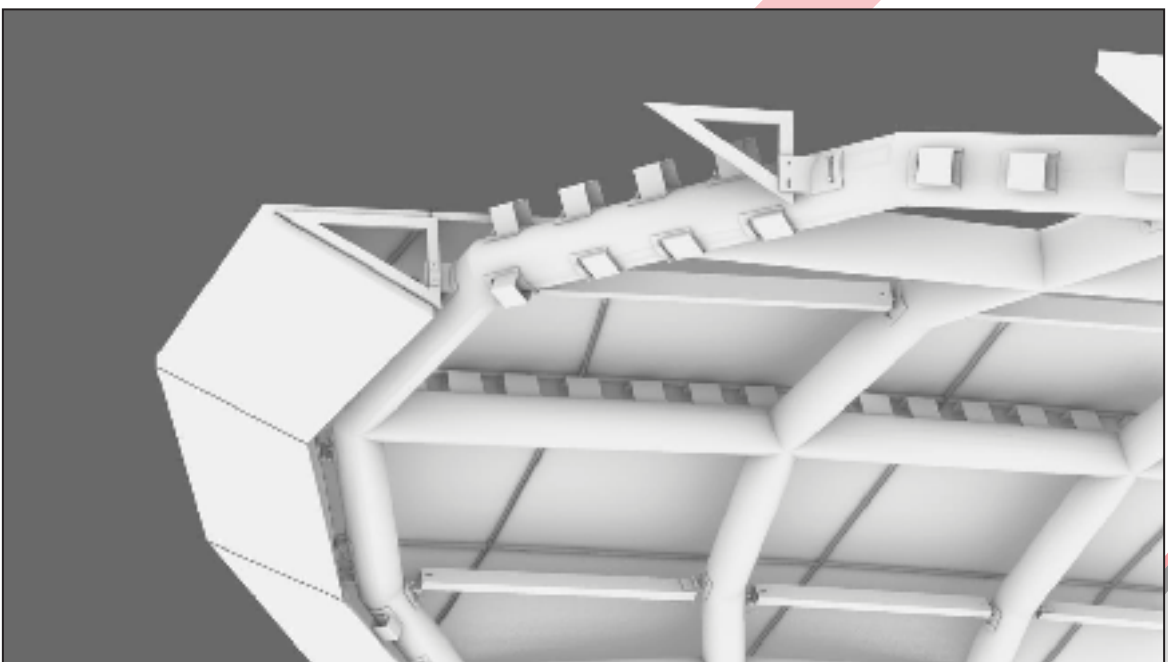
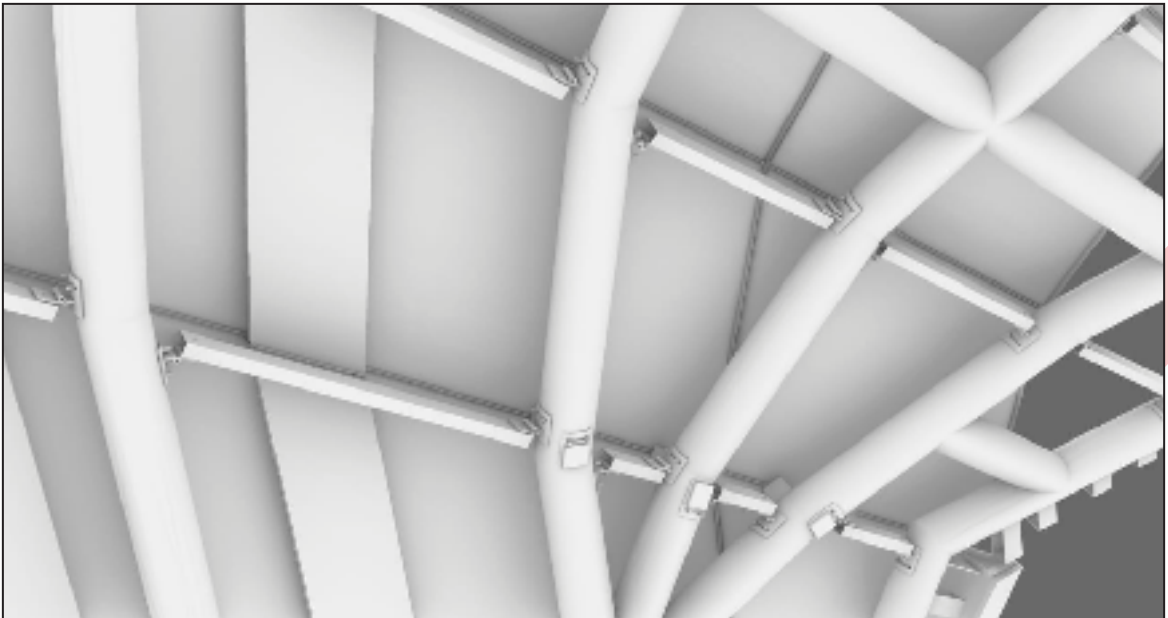


# Ramps Project

Development of the ACP system's 3D modeling and detailing: every bracket, bolt, pin, beam, and ACP panel was modeled in Rhinoceros 3D for high precision for direct extraction of fabrication orders and drawings.

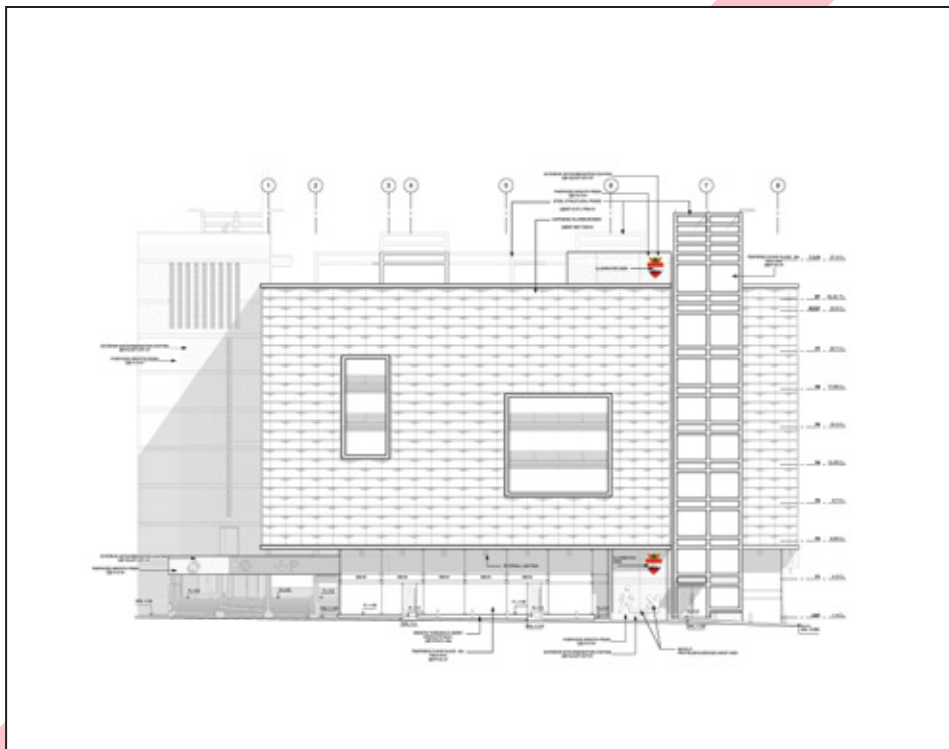
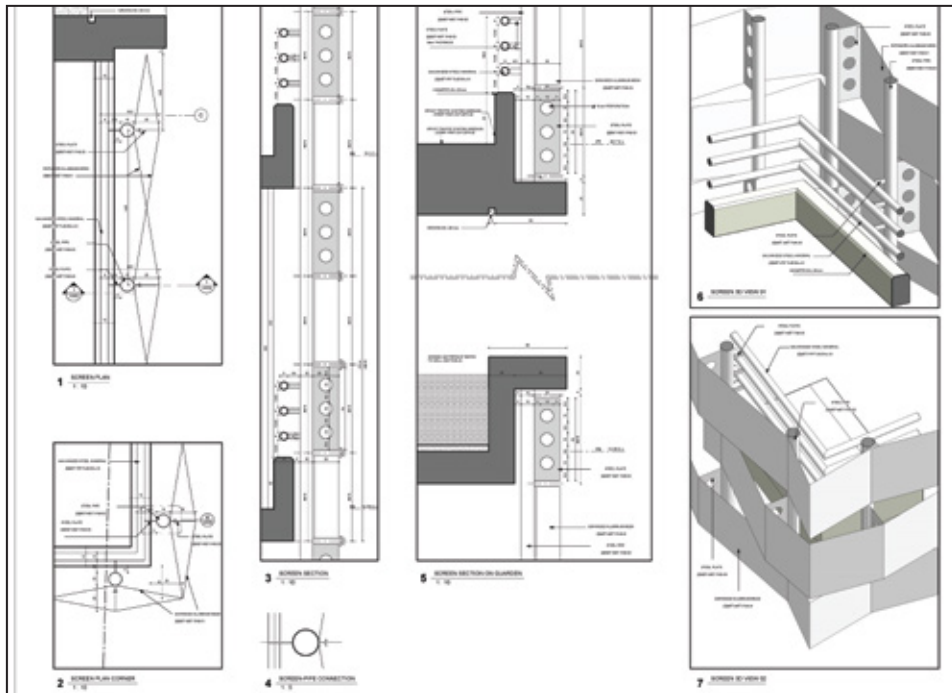
Challenge: aligning two brackets at different angles between structural elements while maintaining straight joints on the ACP panels, despite the main design's curvatures.

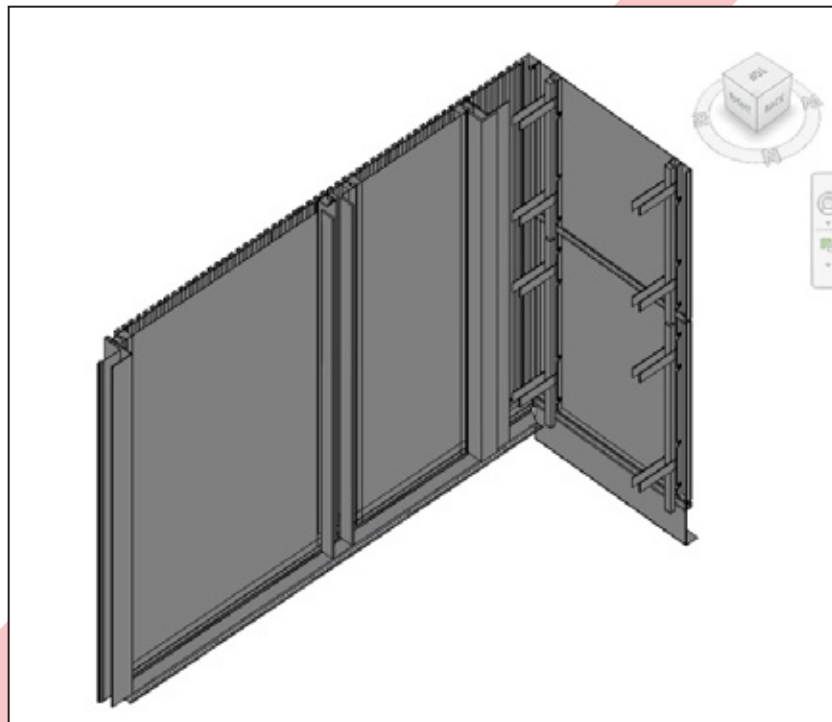
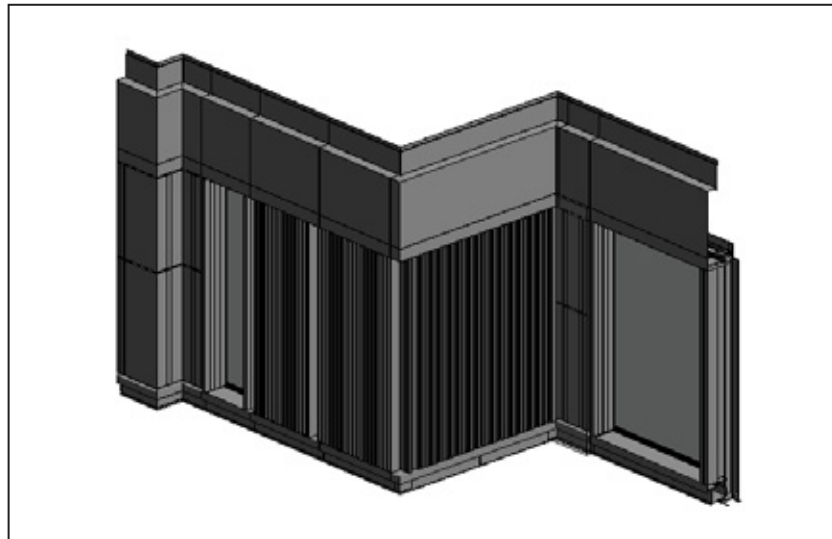
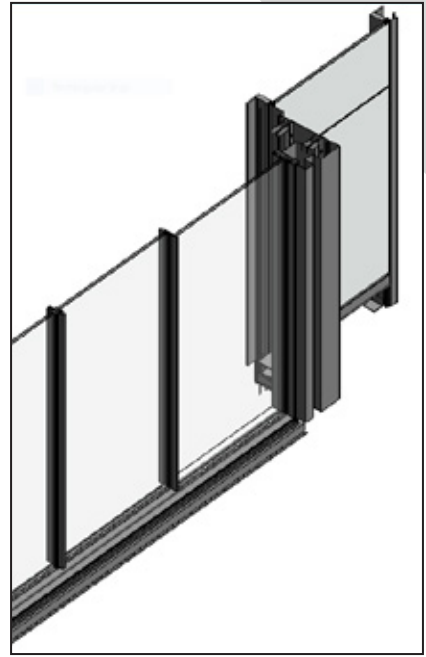
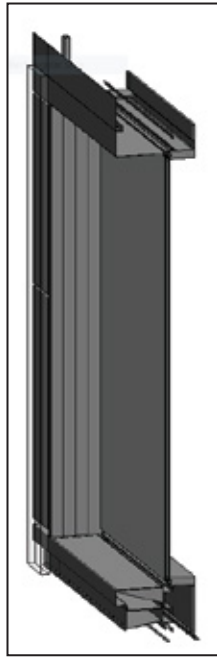
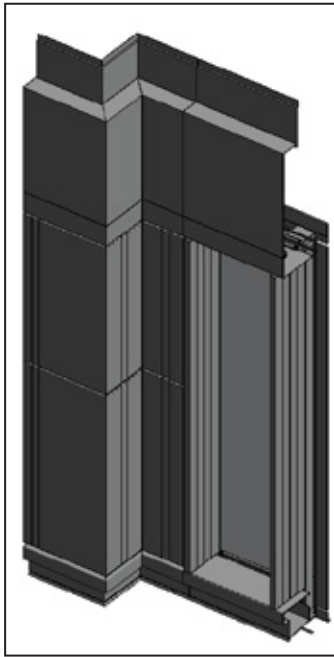
The project was a success, receiving positive feedback for its innovative design-to-fabrication process.



# Screen Project

These images showcase a LOD 400 BIM model, meticulously detailed and fully prepared for the generation of shop drawings and construction documentation. Once finalized, this comprehensive model will be seamlessly exported to Rhinoceros for the creation of precise fabrication models and associated documents





LATEST BLOGS

# Featured Articles

## Nouveau projet: Sioufi Gardens II





- Publié le 1 février 2008 par Guillaume Boudisseau

Commencés fin septembre 2007, les travaux de **Sioufi Gardens II** doivent se terminer en mars 2009. Situé à Sioufi entre le jardin public et la pâtisserie **Noura**, cet immeuble est dans la continuité de celui de Sioufi Gardens.

« La réussite du premier projet nous a encouragés à développer une nouvelle construction dans le même secteur géographique », explique **Riad Salamoun**, le promoteur.

Constitué de huit appartements de 270 m<sup>2</sup>, Sioufi Gardens II dont l'architecture a été confiée à **Gabriel Karam** vient compléter la gamme des unités proposées par **Sioufi Gardens** qui compte 18 logements de 205 et 210 m<sup>2</sup> et 12 appartements de 300 m<sup>2</sup>.

« Il s'est avéré que les grandes tailles ont davantage séduit que les petites.

En proposant des 270 m<sup>2</sup> avec trois chambres à coucher, nous avons ainsi voulu répondre à la demande », analyse **Georges Sioufi**, directeur marketing du projet ayant pour cible les clients avec un budget de 000 400 à 000 500 dollars.

"Plusieurs appartements ont été vendus avant le début des travaux d'excavation."

« La clientèle nous connaissait déjà à travers le premier projet.

À ce jour, 50 % de Sioufi Gardens II est déjà vendu.

Le prix de départ des unités restantes est de 500 1 dollars le m<sup>2</sup>.

Nous avons tablé sur une hausse de 50 dollars le m<sup>2</sup> par étage.

La demande actuelle est relativement bonne malgré la situation du pays.

De nombreux clients sont des Libanais expatriés, leur intérêt vient par vague en fonction de leur optimisme »,

raconte **Georges Sioufi**. L'ensemble des appartements de **Sioufi Gardens**, soit 38 unités (environ 400 9 m<sup>2</sup> de superficie habitable),

est le troisième projet résidentiel en construction sur la même rue.

« Toutefois, **Sioufi Gardens** est à un stade de construction avancé,

le bloc des 205 et 210 m<sup>2</sup> sera terminé en juin 2008,

alors que les appartements de 300 m<sup>2</sup> seront livrés en septembre 2008 »,

précise **Riad Salamoun**, qui possède une solide expérience dans le secteur de la construction.

OUR BEST FEATURES

# WHY CHOOSE US

## **Expert Team**

We Are Convinced That Our Architects Will Design Your Space And Meet Your Needs With Beautiful Aesthetics.

We Are Also Sure That Our Engineers Will Ensure That This Design Is Safe And Functional, Meeting All Appropriate Building Codes.

Our Team Constantly Works To Improve And Enhance Its Skillset Through Ongoing Professional Development, Catching Up With The Latest Technologies To Deliver You The Finest Version Of Your Project.

## **Value Engineering**

In Our Projects, We Focus On Providing Functionality And Aesthetic At The Lowest Cost.

We Search To Substitute Materials And Methods Of Construction With Less Expensive Alternatives, Without Losing Functionality Or Aesthetics.

This Way, We Make Sure That The Project Is Being Performed Within The Predetermined Budget Of The Client.

## **Genuine Leaders**

**Seven Words That Say It All:**

Integrity, Passion, Accountability, Dedication, Creativity, Communication, And Respect.



☎ +961 78825675

✉ info@heap-global.com

🏠 Lebanon, Jeita, sector 4, street 2, Barmo building, GF