

House of Engineers, Architects & Planners

HEAP GLOBAL



☎ 96178825675

✉ info@heap-global.com

🏠 Lebanon, Jeita

intro

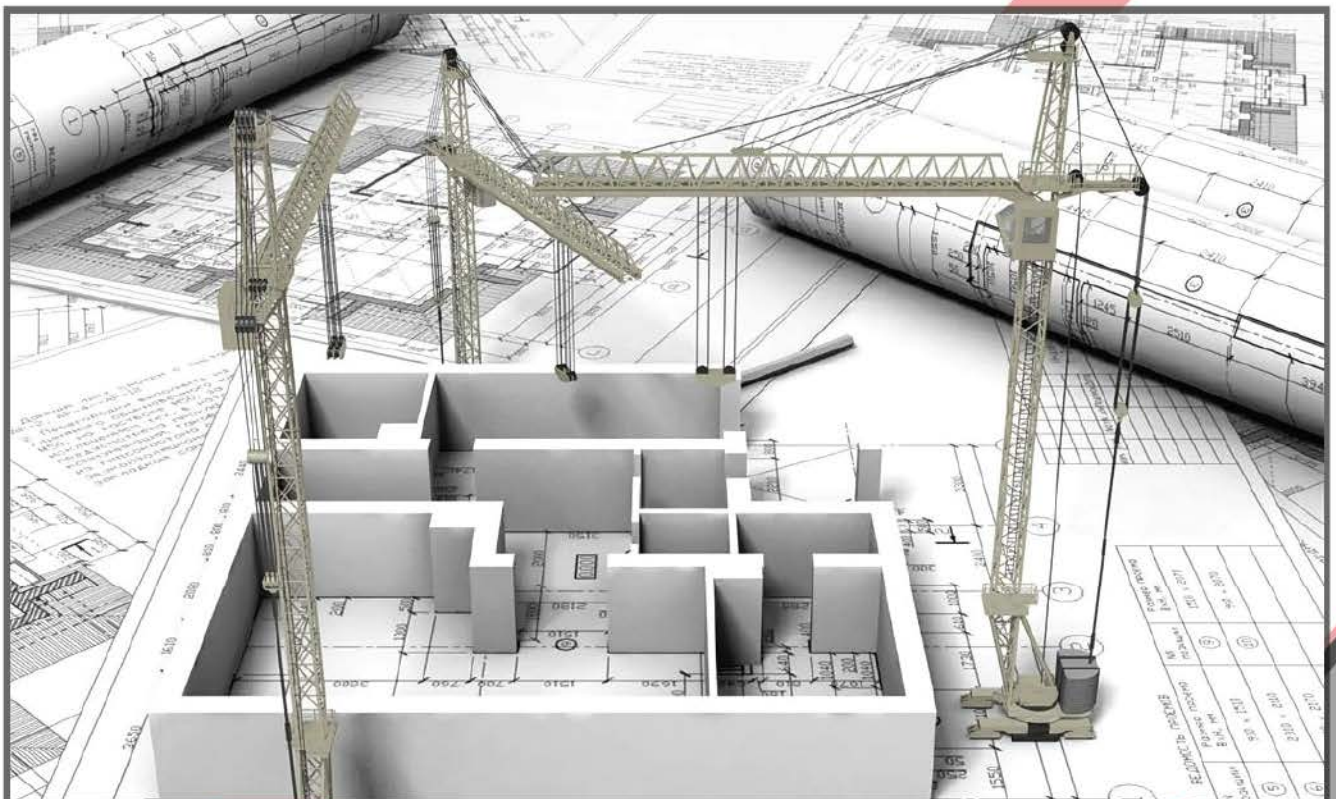
ABOUT US

We are **honored** to present ourselves, we are the **House Of Engineers, Architects and Planners "HEAP GLOBAL"**, a multidisciplinary engineering firm that provides **high-level** services and **solutions** for *both domestic and business sectors.*

After decades of coordination and collaboration with **national** and **international** corporations, we, as founders of **HEAP GLOBAL**, can now **offer you** the **best architectural designs** and **engineering solutions** based on the *constraints and specificity of each particular site.*

WE LISTEN TO YOUR NEEDS AND DEMANDS,
and *aim to create master plans,* which are **not only unique,**
BUT ALSO COMBINING EFFICIENCY,
ECONOMY AND DESIGN.

**HEAP GLOBAL STANDS READY TO WALK
WITH YOU THE EXTRA MILE.**



Gabriel Karam



Principal Architect **PARTNER**
Master In Architecture

Christina Daoud



Principal Structural Engineer **PARTNER**
Bachelor In Civil
And Environmental Engineering

William Abdul Ahad



Business Developer
BA Interior Designer
MBA International Business

Vanessa Barmo



Senior Civil Engineer
Bachelor In Civil
And Environmental Engineering

Marcello Lagos



3D Visualizer
Architect

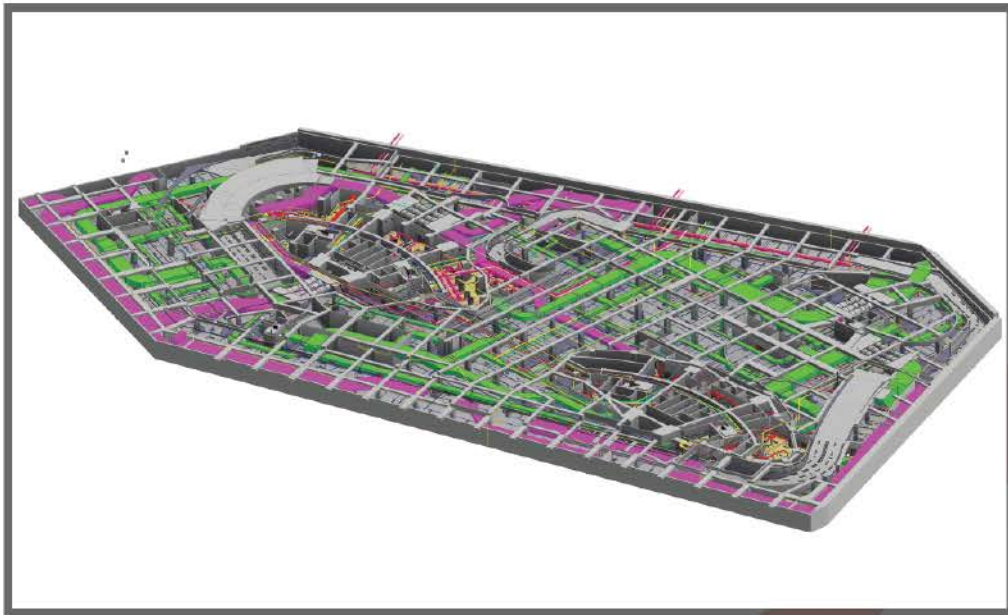
OUR SERVICES

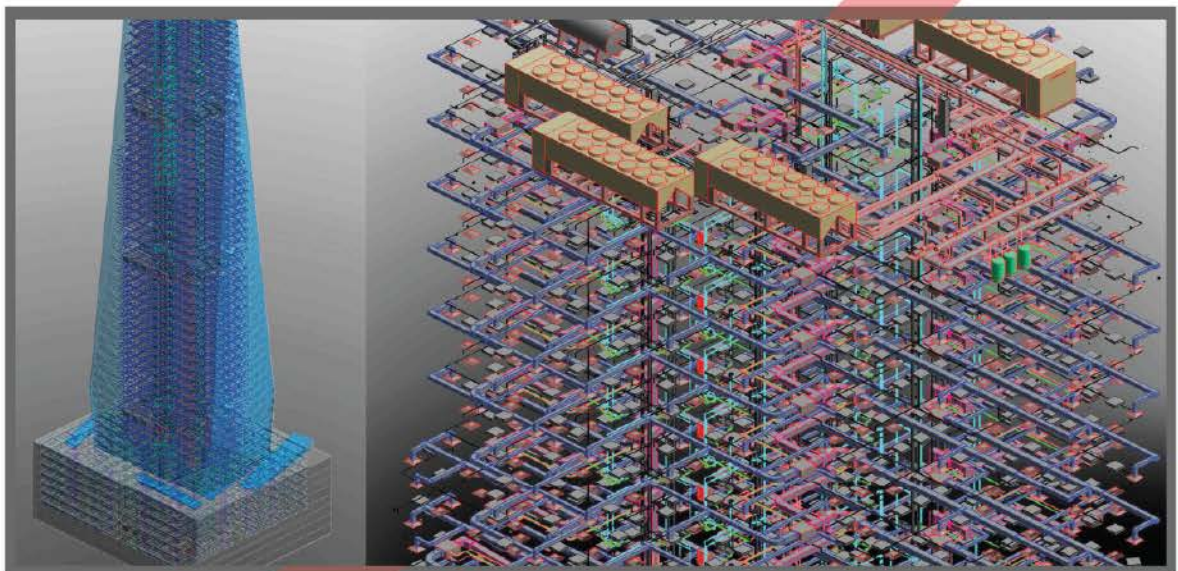
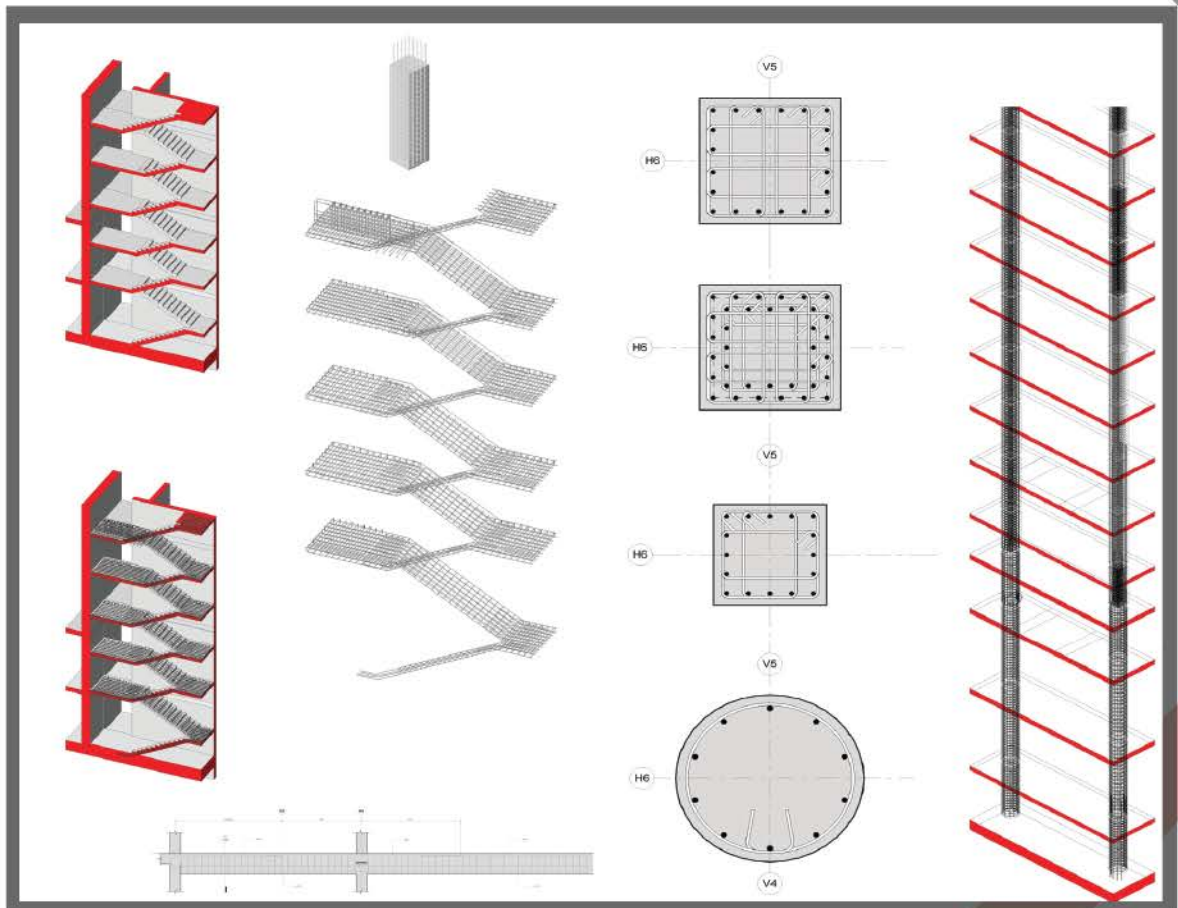
CHECK OUT WHAT WE DO

HEAP - BIM

We have been supporting development companies
in their movement to **BIM from CAD**.

We act as a strategic **BIM** partner to the clients, teaching and preparing them
for consistent relocation, *from CAD drafting to BIM implementation.*





HEAP - Permit Consultants

Starting from *scratch* or according to your *schedule*, we will provide advice on the **most legal** and **expedient** method for you to receive the permit file from the relevant authorities also we can undertake all this process by **ourselves**.

SAVE TIME AND MONEY

Are You Familiar With Local Building and Zoning Permit Approval Processes?

HEAP - Permit Consultants provides a full range of land use consulting and permitting services to a diverse group of clients.

Our expertise is focused on acquiring land use and zoning analysis, securing building and occupancy permits and parceling.

Providing services to Architects, Engineers, Developers, Business Owners, General Contractor, Real Estate Companies etc....

Whatever the size and scope of your project, and wherever the location, unexpected variables may require you to obtain multiple approvals and permits from unfamiliar agencies.

HEAP - Permit Consultants will assist you in obtaining **all required permits, from the beginning to the end of the process,** by *concisely evaluating your project needs and persistently working with you and permitting authorities.*

WE WILL SECURE EVERY TYPE OF PERMIT AND APPROVAL, INCLUDING:

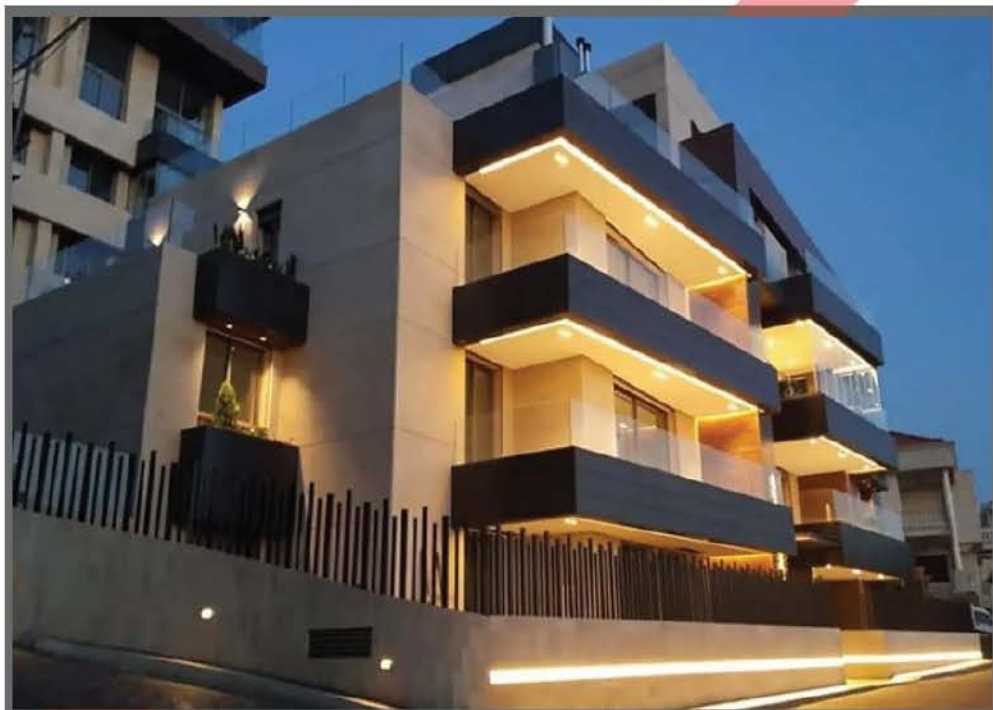
*Zoning and Land use research
Building Codes Analysis
Building Permits & Related Approvals
Direction Generale De L'Urbanisme Architectural review and file preparation
Building permits, including multiple permits and or approvals
(Electricity, Defense Civil, Ministry of Tourism, Ministry of Culture, etc...)
Occupancy permits
Parceling*

References:

Residential Villa - Fakra Club



KEG Residential Buildings – Beit Mery



Moduloft – Rmeil



Department Stores - Solidere



Beirut City Center-Hazmieh

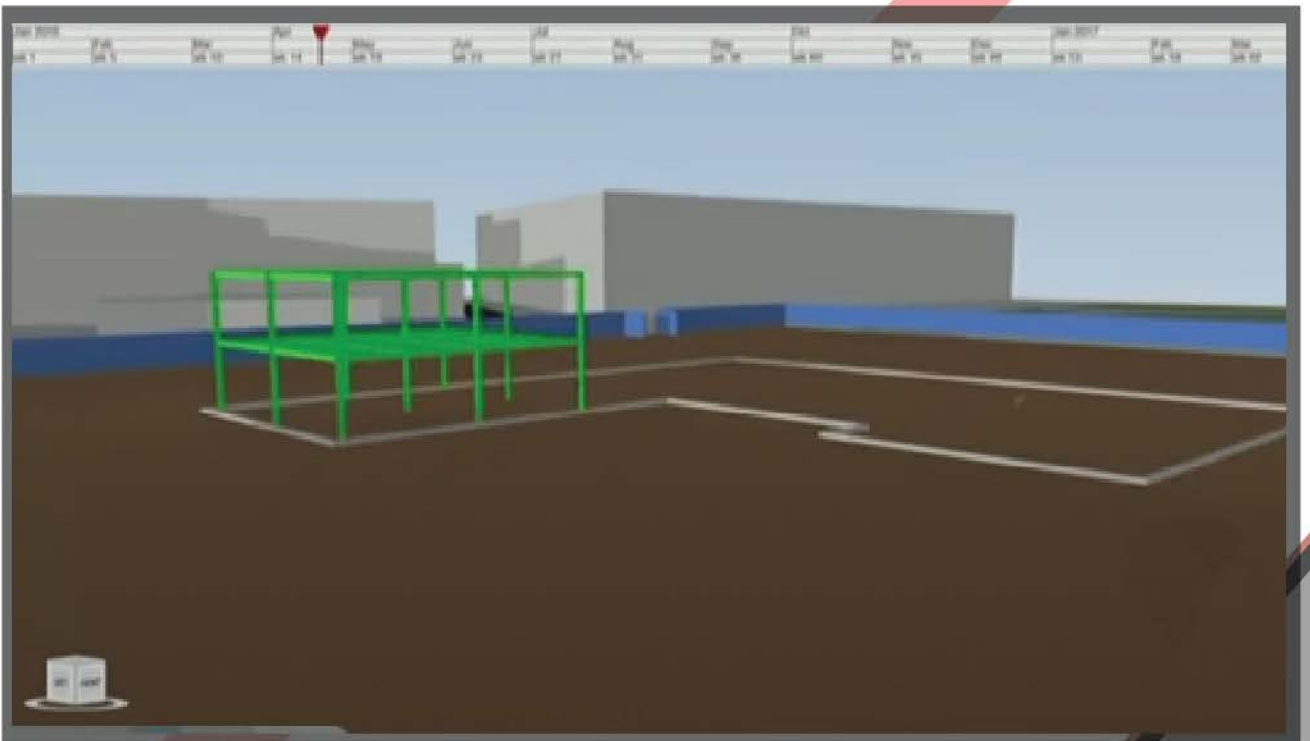
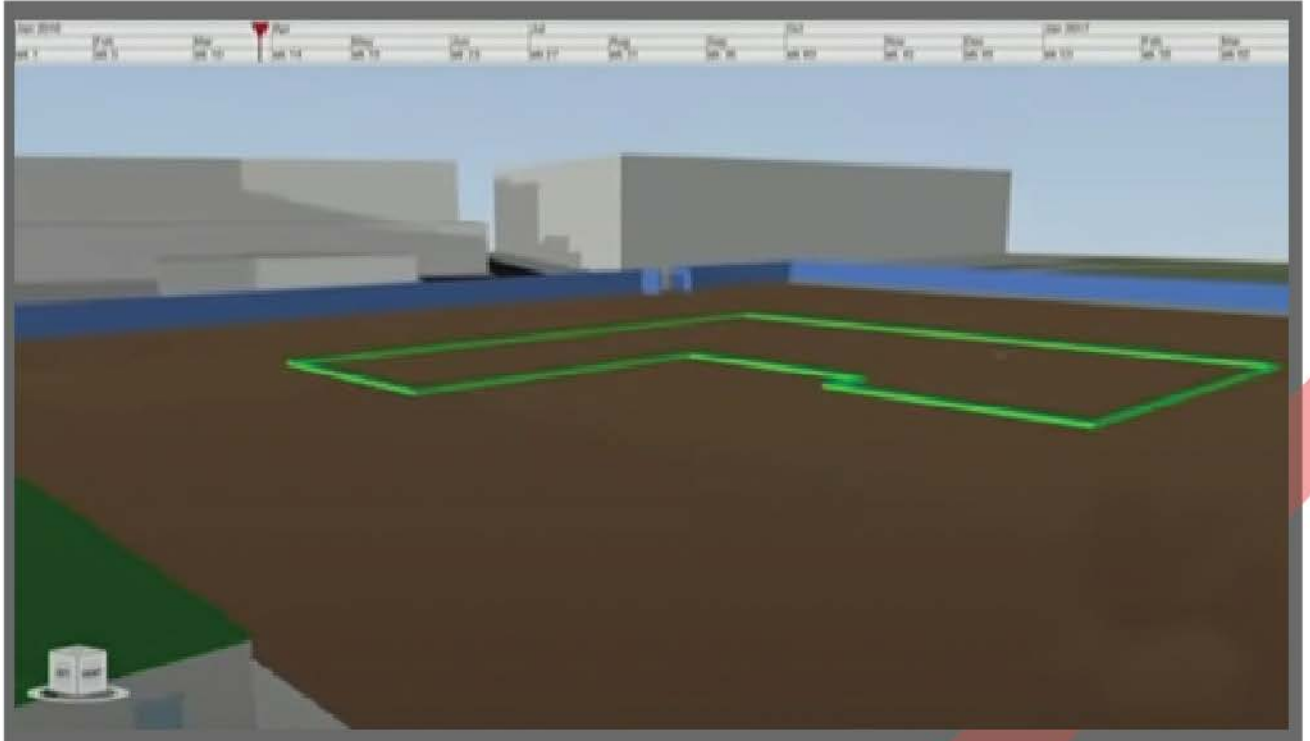


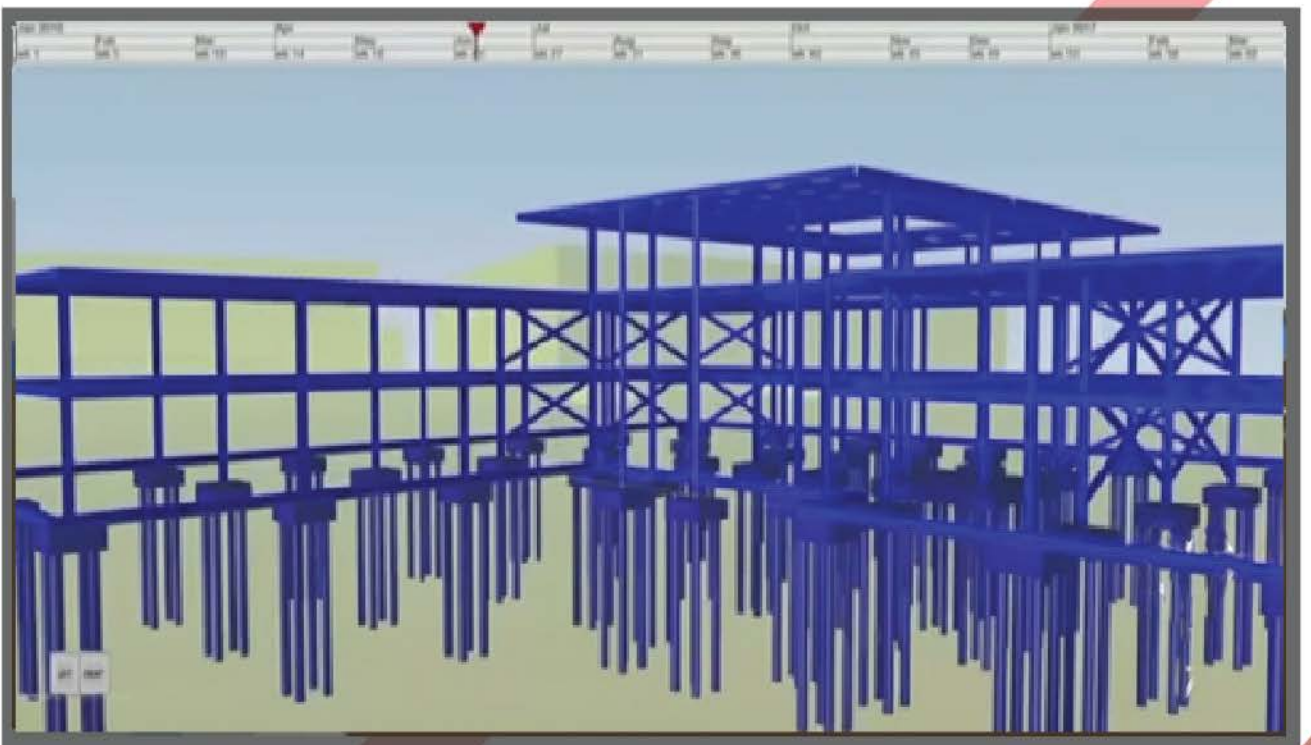
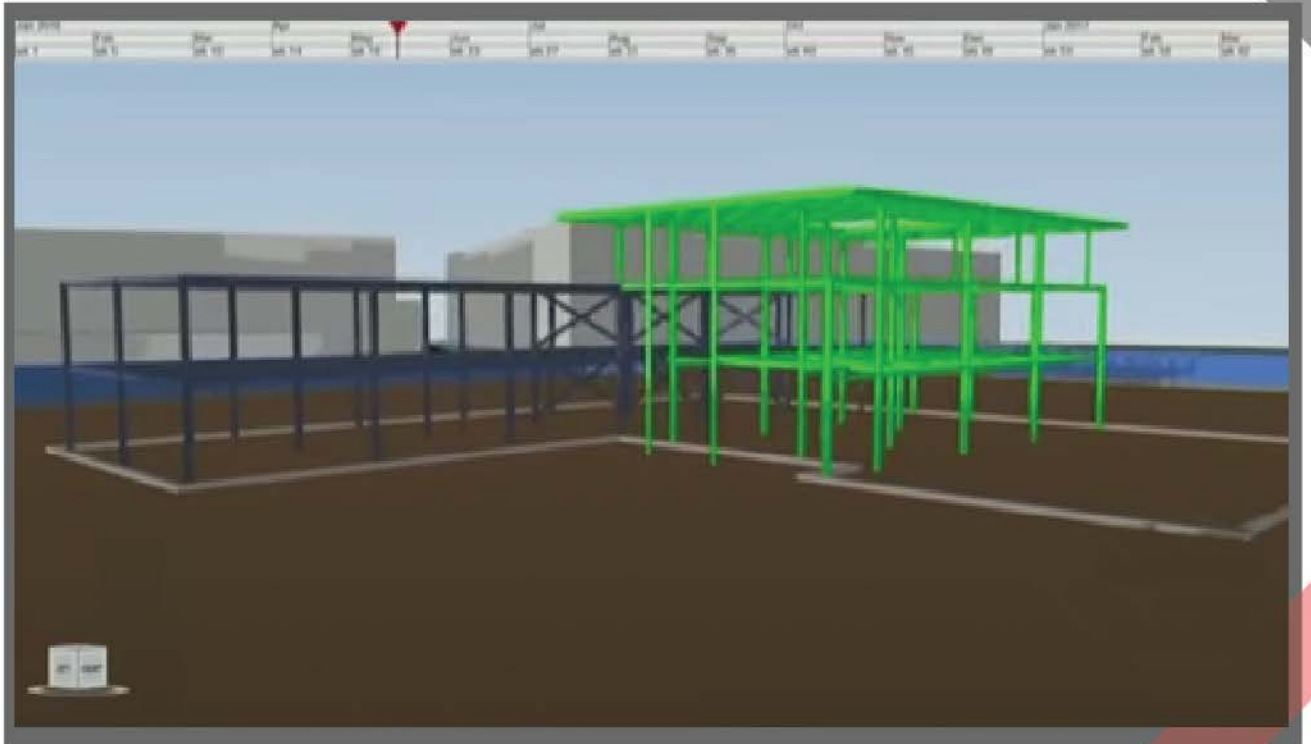
Lot renovation-Rmeil



HEAP - 4D

4D=3D **models** + time information 4D **Building Information Modeling** (4D BIM) is a process to the **intelligent** of a **3D Digital Model** with **time or schedule** related **information**

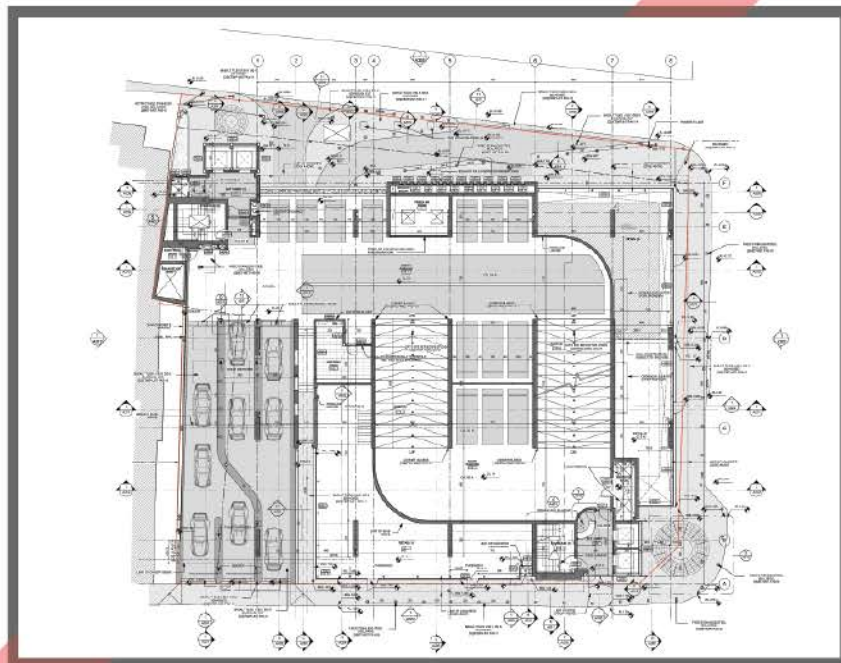
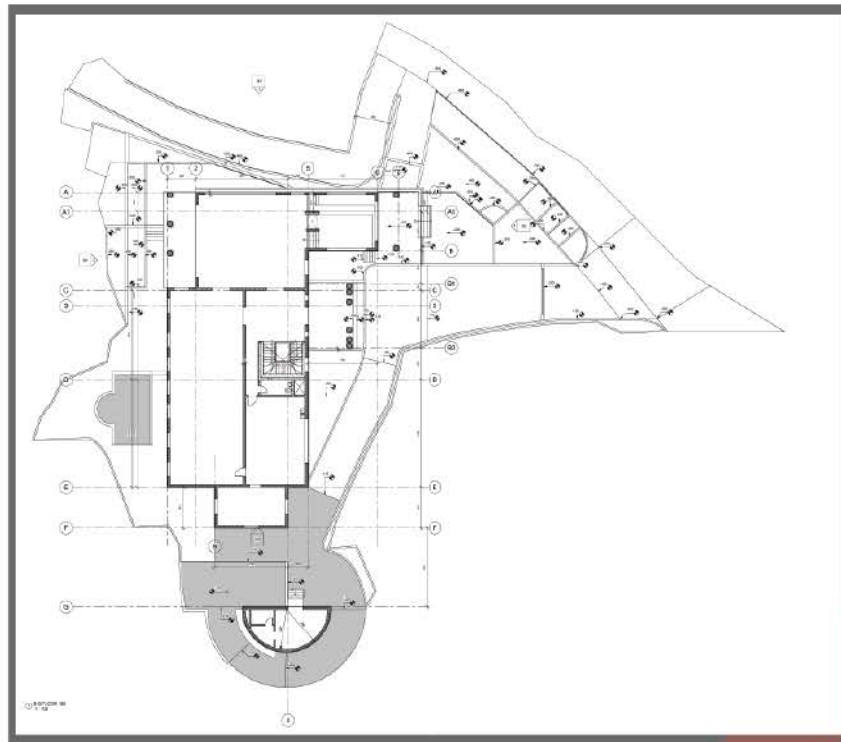


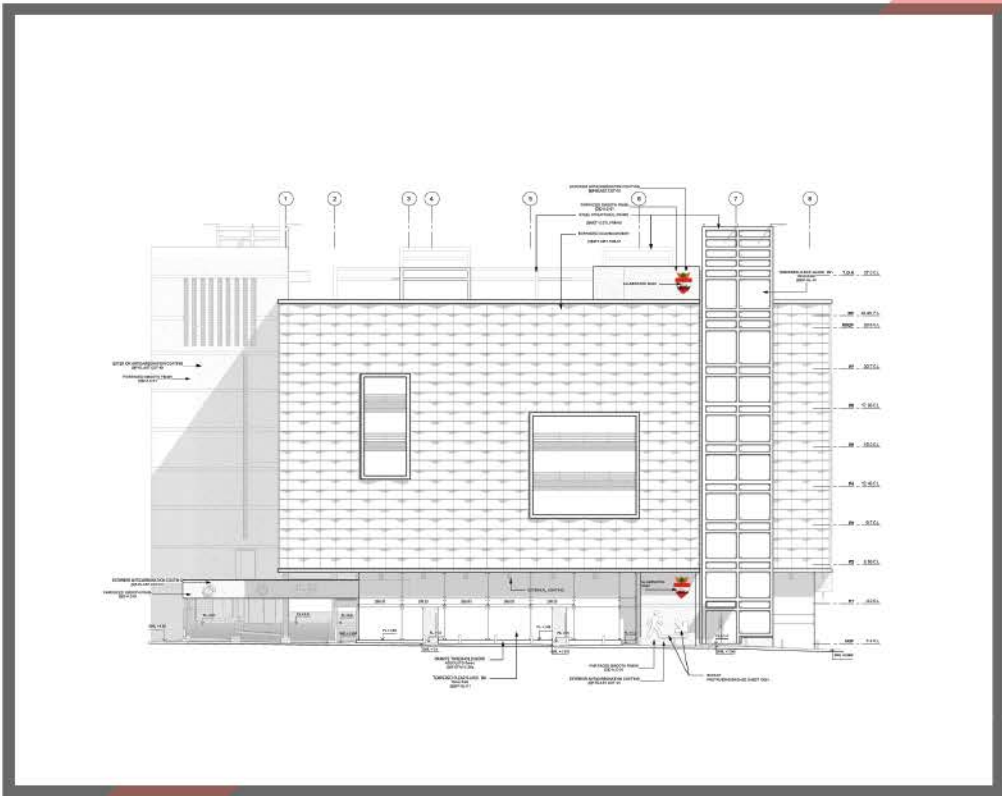
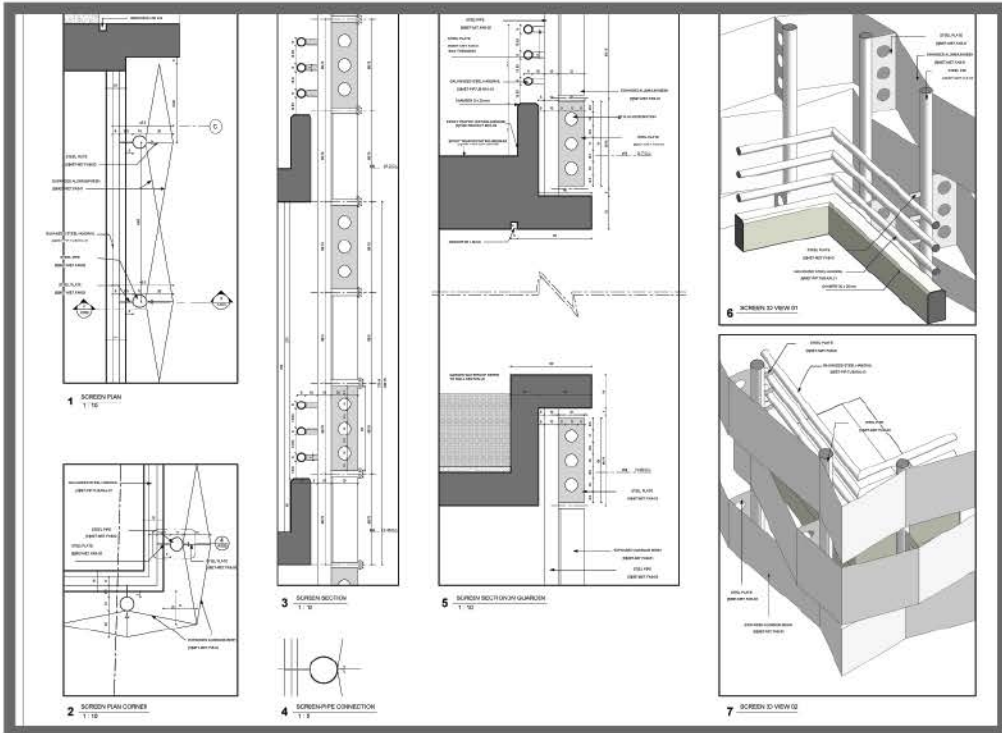


HEAP - Architectural Design

We make living spaces with **passion**, combining the *innovative* and the *stylish* to meet **needs** and **requests**.

Detailed drawings are given either for **building permits** that we seek after **ourselves**, or for **execution** and **construction**.





HEAP - Structural Design

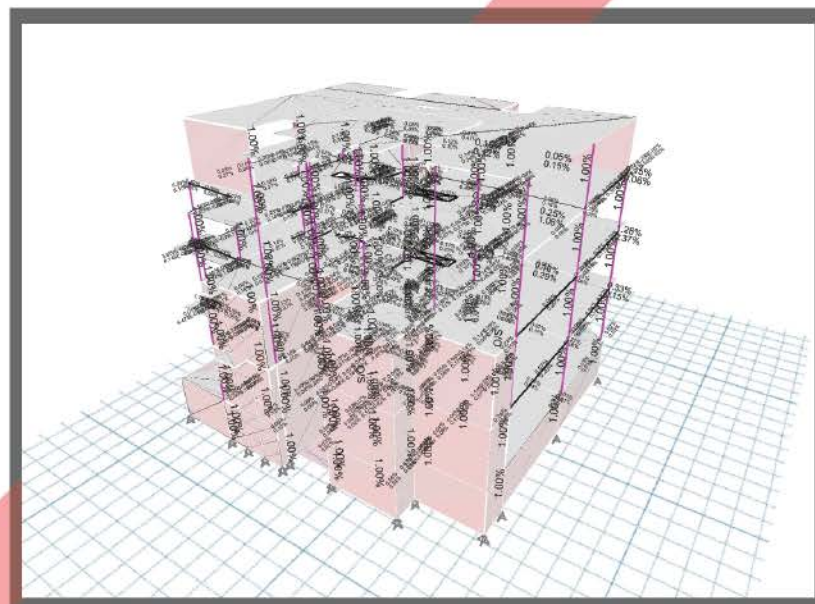
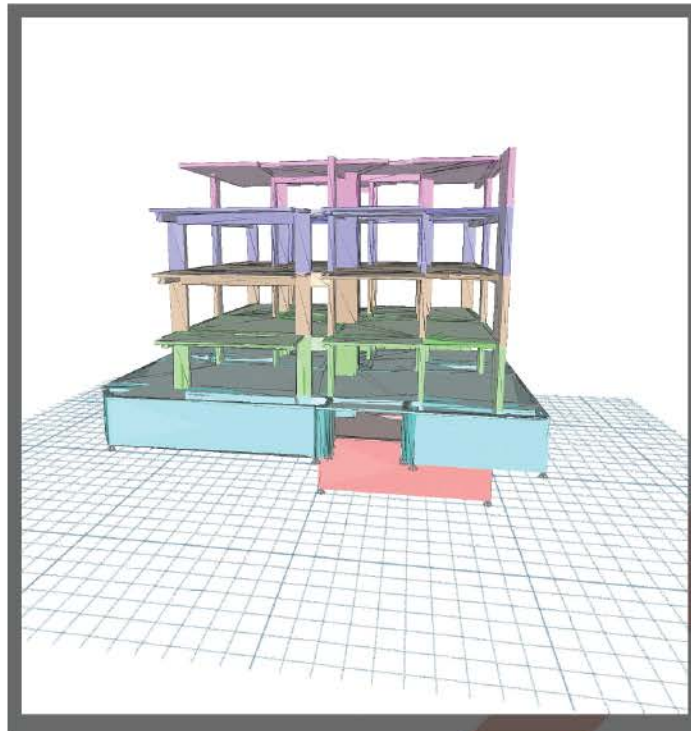
Based on **ACI code 318 - 14**, structures are modeled using the *finite element method* to be able to efficiently design

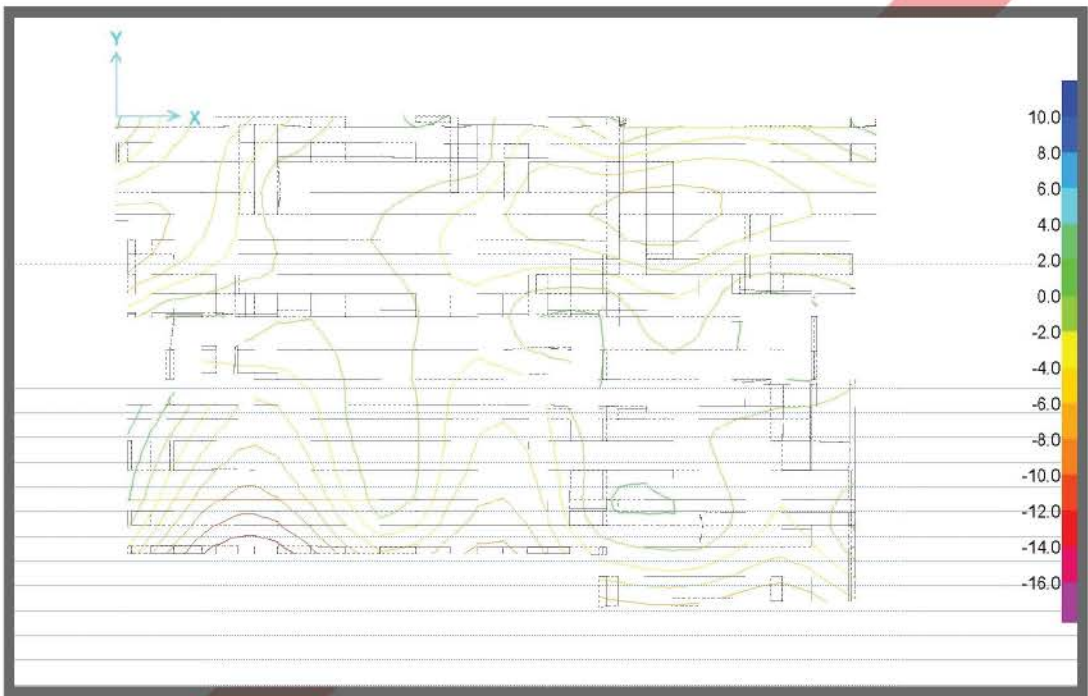
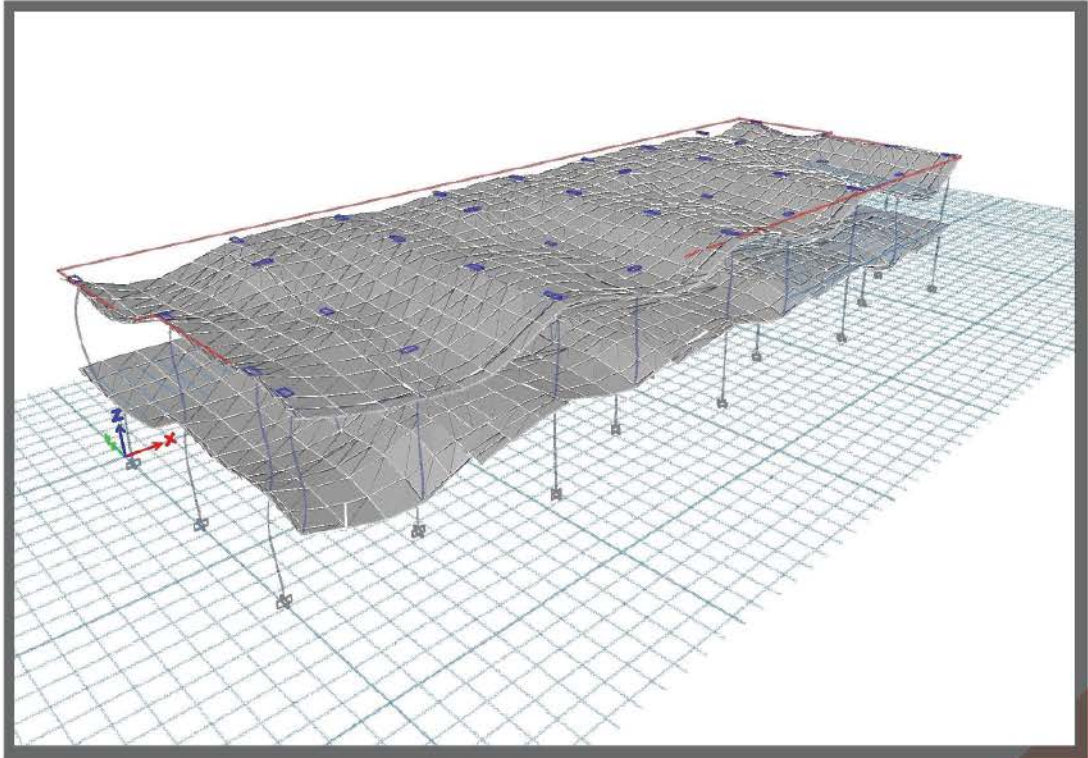
steel frames, concrete frames, concrete slabs, concrete shear walls, composite beams, composite columns, steel joists and foundations...

We also provide **seismic analysis** as per **international codes**

Ubc97 / IBC / ACI / ASCE / ASTM / ASME / AISC

to **protect** from **EARTHQUAKES** when needed.





HEAP - Construction

*In any construction service, we **provide** you with the **best** on-site teams to ensure **high-quality technical work**.*

We also interfere from the early stages of the project by providing feasibility studies, budgeting, and social and environmental impact assessments.

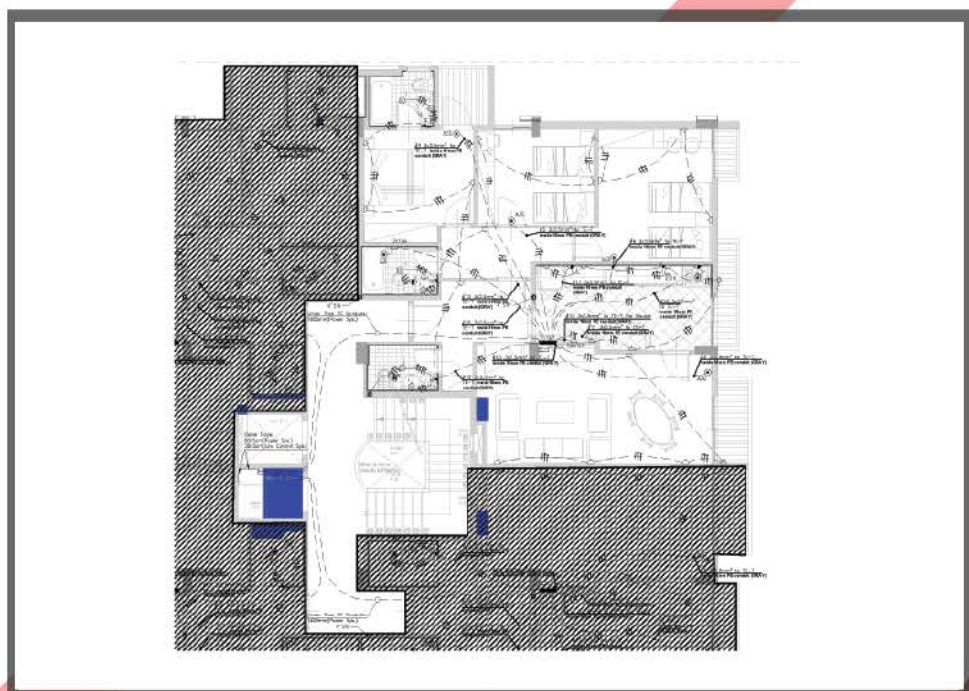
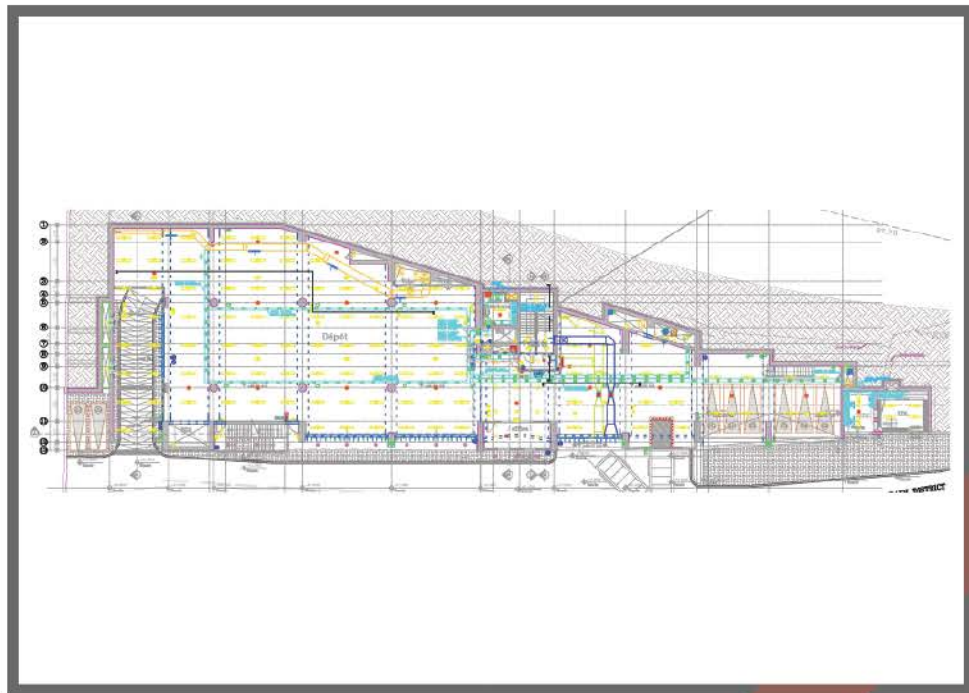


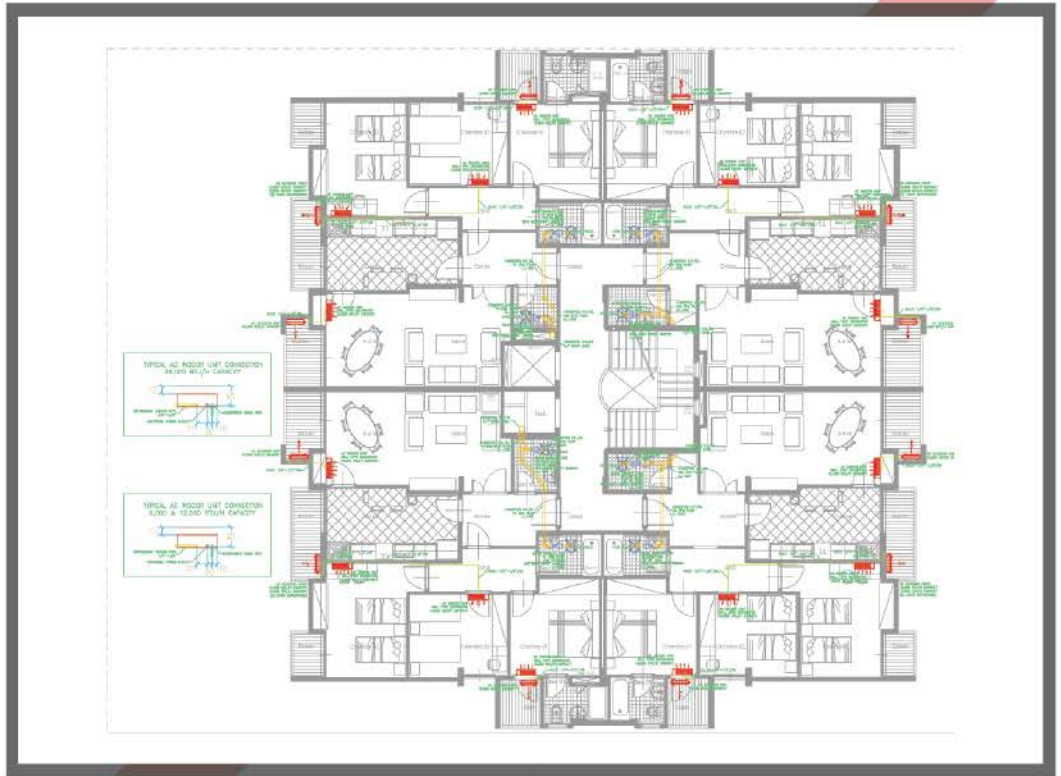
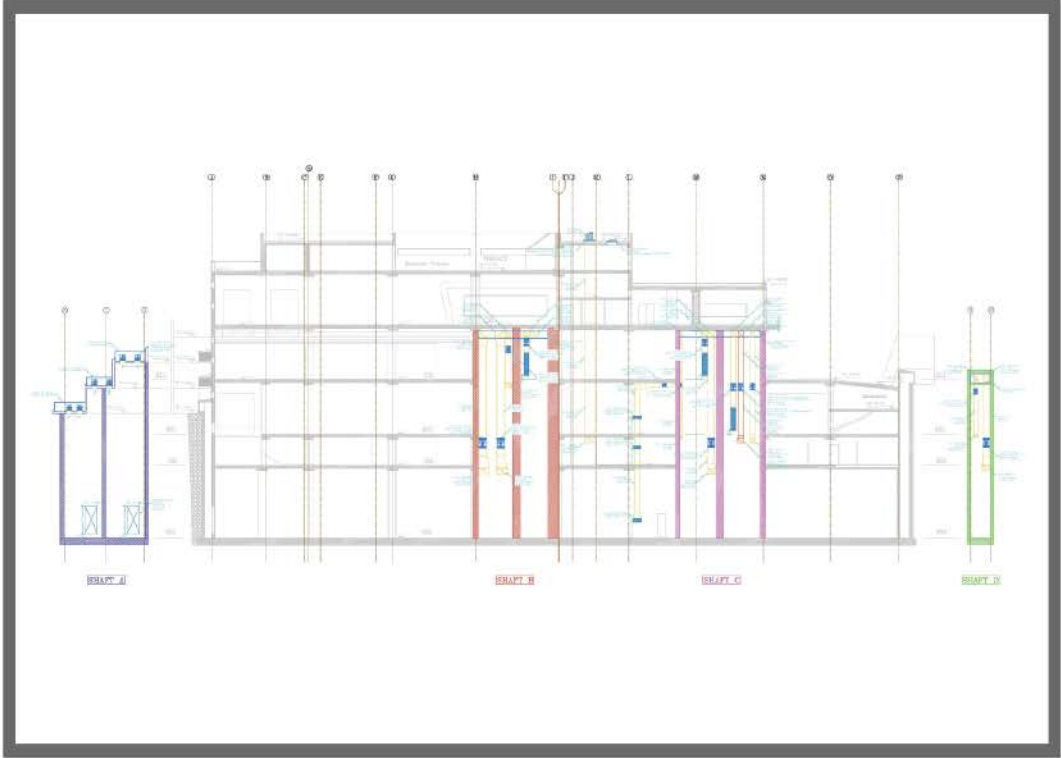


HEAP - MEP Design

We arrange, plan and oversee the taking after
Mechanical, Electrical, and Plumbing systems:

*Water systems, Drainage systems, HVAC systems, Fire systems,
Lighting systems, Power systems, Earthing systems,
and Low current systems.*





LATEST PROJECTS

LET'S GO THE EXTRA MILE TOGETHER

Villa Derjany - Lebanon, Rachiine





Mak Villa

- Lebanon, Beit Mery



Address Sky View

- United Arab Emirates, Dubai

Position: BIM Consultant (part of BIM-ME team)

Role: Coordination between different trades and shop drawings



Awkar Residence

- Lebanon, Rachiiine





AJ. Morino Tower - Nigeria



North Souks Department Store - Lebanon, Down Town

Position: Part of SKP team (Samir Khairallah And Partners)

Role: Legal Consultant, Construction Permit



El Sayed Villa

- Lebanon, Deir Nbouh





Villa A

- Lebanon, Bsous



Chairman villa

- Nigeria



Oakridge Resort - Lebanon, Faqra

Position: Senior Architect
{Part of SKP team (Samir Khairallah And Partners)}

Role: Legal Consultant, Technical Project Manager

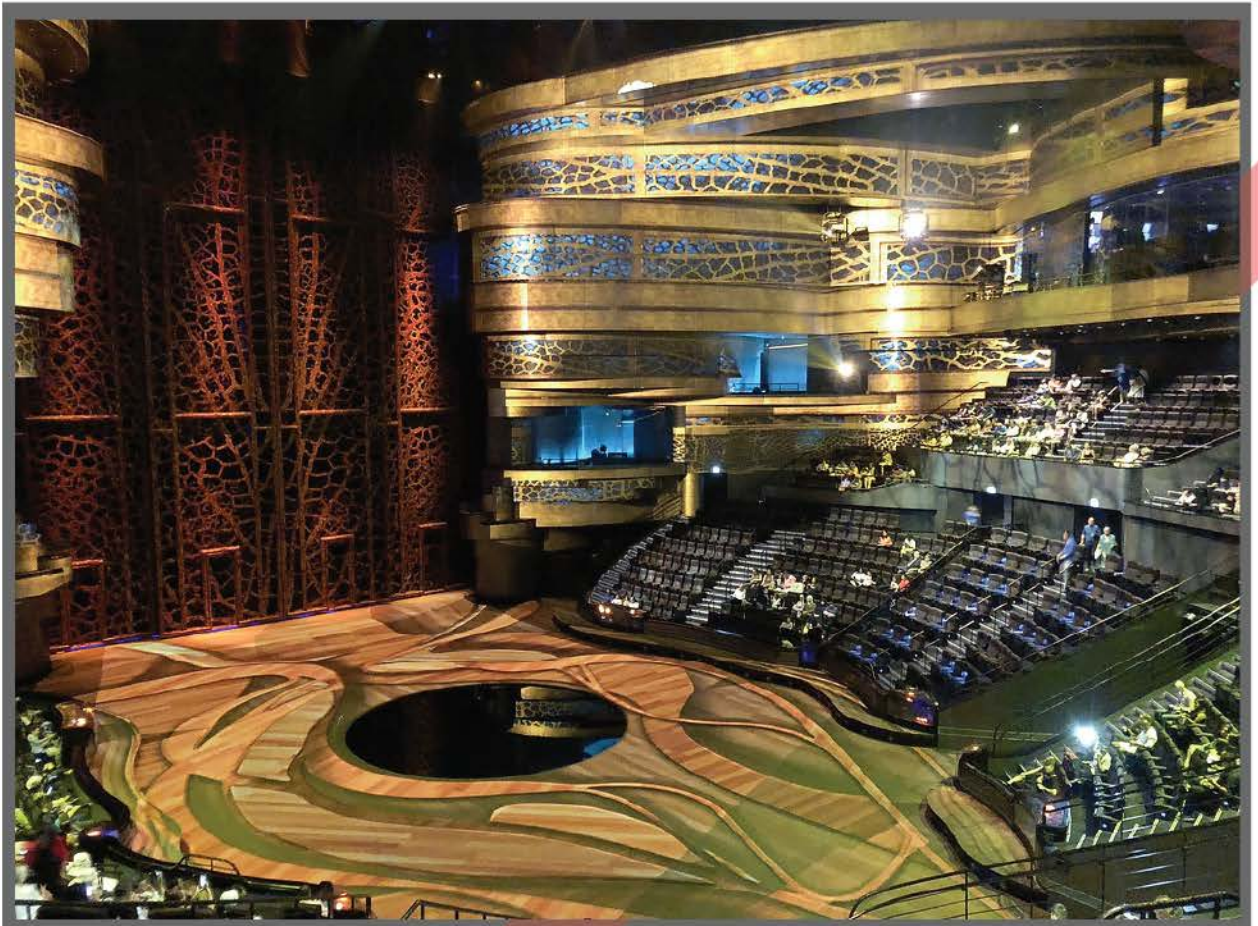


Habtoor Theatre

- United Arab Emirates, Dubai

Position: BIM Consultant (Part of BIM-ME team)

Role: Coordination with different trades and Shop Drawings



Intercontinental Hotel

- Saudi Arabia, Khobar

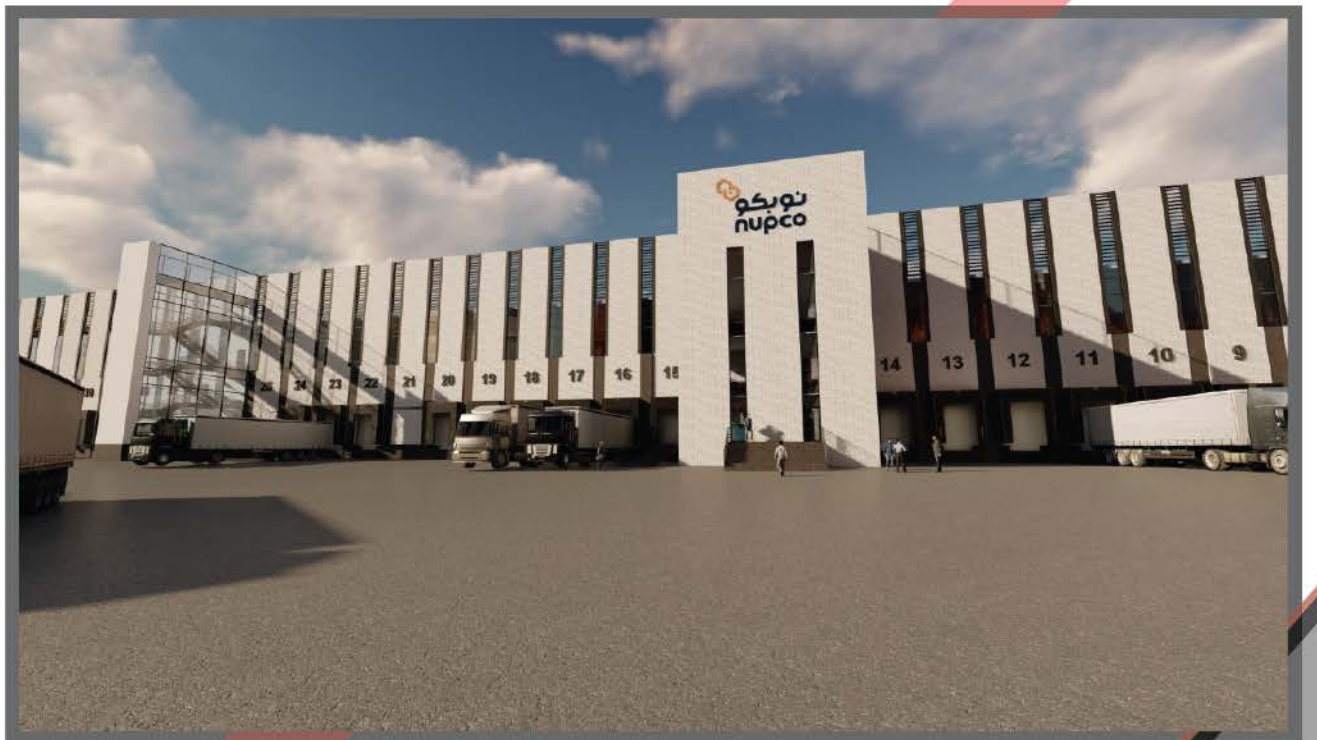
Position: Senior Architect
{Part of SKP team (Samir Khairallah And Partners)}

Role: Technical Project Manager



Nupco

- Saudi Arabia



Park View - Nigeria





Anambra - Nigeria





159 B

- Lebanon, Beit Mery





Villa K

- Lebanon, Kfour El Arabe



Lakkis Residence

- Lebanon, Sahel Alma



Beirut & Bay Tower

- Lebanon, Down Town

Position: Senior Architect
{Part of SKP team (Samir Khairallah And Partners)}

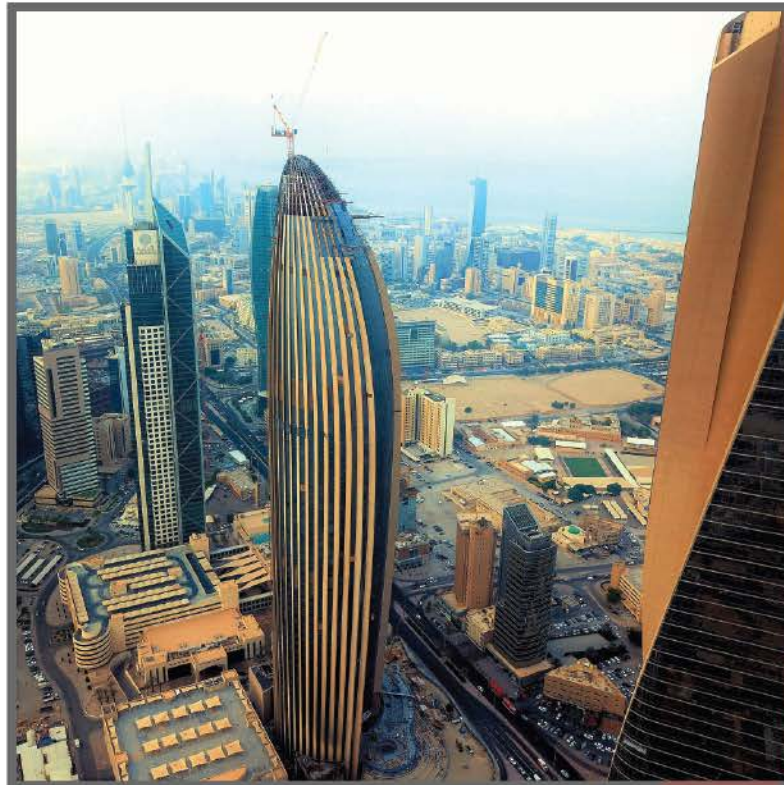
Role: Legal Consultant, Technical Project Manager



National Bank Of Kuwait - Kuwait

Position: BIM Consultant (Part of BIM-ME team)

Role: Coordination with different trades and Shop Drawings



2701 Fanar

- Lebanon, Fanar



SHOPS & RESTAURANTS
In collaboration with
KANAAN ENGINEERING GROUP

RESTAURANTS

Crepaway



Zaatar W Zeit



Atilla



Nasma



SHOPS

JoueClub



Esprit



Damac



Collezione



Magarbe



JustCavalli



Cotton On



Porsh



LATEST BLOGS

Featured Articles

Nouveau projet: Sioufi Gardens II



- Publié le 1 février 2008 par Guillaume Boudisseau

Commencés fin septembre 2007, les travaux de **Sioufi Gardens II** doivent se terminer en mars 2009. Situé à Sioufi entre le jardin public et la pâtisserie **Noura**, cet immeuble est dans la continuité de celui de **Sioufi Gardens**.

« La réussite du premier projet nous a encouragés à développer une nouvelle construction dans le même secteur géographique », explique **Riad Salamoun**, le promoteur.

Constitué de huit appartements de 270 m², **Sioufi Gardens II** dont l'architecture a été confiée à **Gabriel Karam** vient compléter la gamme des unités proposées par **Sioufi Gardens** qui compte 18 logements de 205 et 210 m² et 12 appartements de 300 m².

« Il s'est avéré que les grandes tailles ont davantage séduit que les petites.

En proposant des 270 m² avec trois chambres à coucher, nous avons ainsi voulu répondre à la demande », analyse **Georges Sioufi**, directeur marketing du projet ayant pour cible les clients avec un budget de 400 000 à 500 000 dollars.

"Plusieurs appartements ont été vendus avant le début des travaux d'excavation."

« La clientèle nous connaissait déjà à travers le premier projet. À ce jour, 50 % de Sioufi Gardens II est déjà vendu.

Le prix de départ des unités restantes est de 1 500 dollars le m².

Nous avons tablé sur une hausse de 50 dollars le m² par étage.

La demande actuelle est relativement bonne malgré la situation du pays.

De nombreux clients sont des Libanais expatriés, leur intérêt vient par vague en fonction de leur optimisme »,

raconte **Georges Sioufi**. L'ensemble des appartements de **Sioufi Gardens**, soit 38 unités (environ 9 400 m² de superficie habitable),

est le troisième projet résidentiel en construction sur la même rue.

« Toutefois, **Sioufi Gardens** est à un stade de construction avancé, le bloc des 205 et 210 m² sera terminé en juin 2008,

alors que les appartements de 300 m² seront livrés en septembre 2008 »,

précise **Riad Salamoun**, qui possède une solide expérience dans le secteur de la construction.

OUR BEST FEATURES

WHY CHOOSE US

Expert Team

We Are Convinced That Our Architects Will Design Your Space And Meet Your Needs With Beautiful Aesthetics.

We Are Also Sure That Our Engineers Will Ensure That This Design Is Safe And Functional, Meeting All Appropriate Building Codes.

Our Team Constantly Works To Improve And Enhance Its Skillset Through Ongoing Professional Development, Catching Up With The Latest Technologies To Deliver You The Finest Version Of Your Project.

Value Engineering

In Our Projects, We Focus On Providing Functionality And Aesthetic At The Lowest Cost.

We Search To Substitute Materials And Methods Of Construction With Less Expensive Alternatives, Without Losing Functionality Or Aesthetics.

This Way, We Make Sure That The Project Is Being Performed Within The Predetermined Budget Of The Client.

Genuine Leaders

Seven Words That Say It All:


Integrity, Passion, Accountability, Dedication, Creativity, Communication, And Respect.



 **HEAP**
House of Engineers, Architects & Planners

 96178825675

 info@heap-global.com

 Lebanon, Jeita, sector 4, street 2, Barmo building, GF